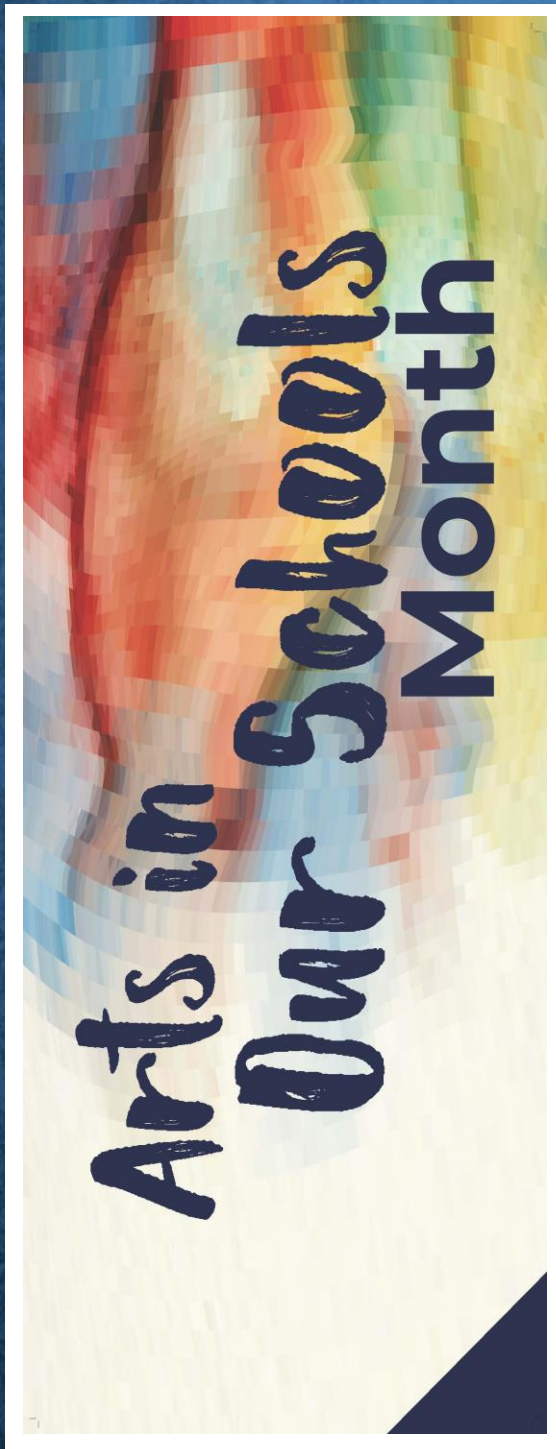


Banner Project Guidebook 2020



Presented by
Visual & Performing Arts Department
Orange County Public Schools

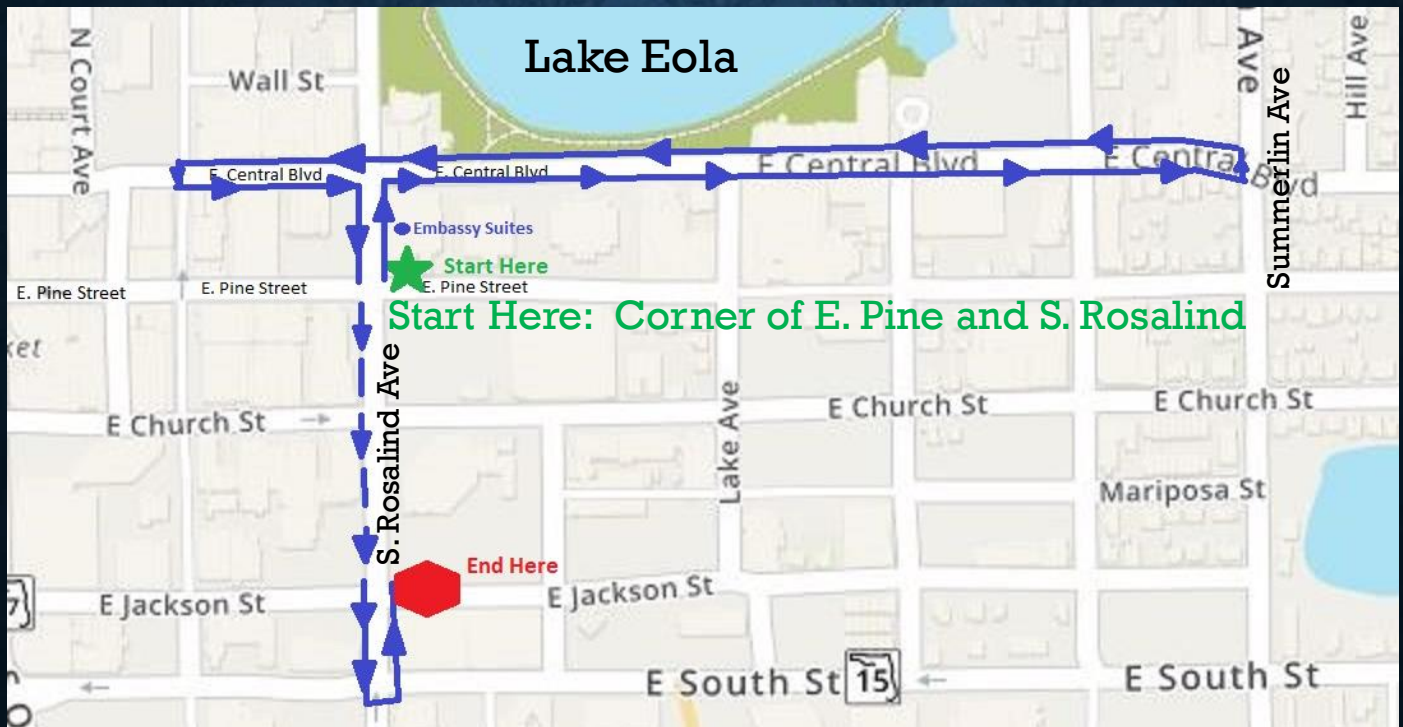
In partnership with the City of Orlando

PROJECT DESCRIPTION

The Banner Project is a collaboration between the City of Orlando and Orange County Public Schools. School art programs were provided one recycled, vinyl banner left over from previous downtown events and asked to create a work of art inspired by a master artist. Each banner was hand-painted by art students and then sealed with a protectant to help preserve the work while exposed to the elements. This guidebook provides pictures of both sides of each banner as well as a bit of information about the artists who influenced the work of the students. All banners can be viewed during the month of March in celebration of Arts in Our Schools Month.

TAKE THE BANNER PROJECT WALKING TOUR!

The best way to view the beautiful hand-painted banners is to use this guidebook and follow the walking tour diagrammed below. Each banner is hung in the order of the pictures in this book starting on page 4. You will see the name of the school and information about the master artist(s) who inspired the piece.



PARTICIPATING SCHOOLS

- Aloma Elementary School
- Apopka Elementary School
- Arbor Ridge K8 School
- Avalon Elementary School
- Avalon Middle School
- Azalea Park Elementary School
- Baldwin Park Elementary School
- Bay Lake Elementary School
- Bonnevillie Elementary School
- Boone High School
- Camelot Elementary School
- Castleview Elementary School
- Chain of Lakes Middle School
- Cheney Elementary School
- Clay Springs Elementary School
- College Park Middle School
- Colonial High School
- Conway Middle School
- Cypress Creek High School
- Deerwood Elementary School
- Dillard St. Elementary School
- Discovery Middle School
- Dr Phillips High School
- Dr. Phillips Elementary School
- Eagle Creek Elementary School
- Eagle's Nest Elementary School
- East Lake Elementary School
- East River High School
- Eccleston Elementary School
- Edgewater High School
- Endeavor Elementary School
- Evans High School
- Forsyth Woods Elementary School
- Frangus Elementary School
- Glenridge Middle School
- Gotha Middle School
- Hiawassee Elementary School
- Hidden Oaks Elementary School
- Hillcrest Elementary School
- Howard Middle School
- Hungerford Elementary School
- Jackson Middle School
- Jones High School
- Keene's Crossing Elementary School
- Lake Como K8 School
- Lake Gem Elementary School
- Lake George Elementary School
- Lake Nona High School
- Lake Nona Middle School
- Lake Sybelia Elementary School
- Lake Weston Elementary School
- Lake Whitney Elementary School
- Lakeville Elementary School
- Laureate Park Elementary School
- Liberty Middle School
- Little River Elementary School
- Lockhart Elementary School
- Maitland Middle School
- Maxey Elementary School
- Memorial Middle School
- MetroWest Elementary School
- Moss Park Elementary School
- Ocoee Elementary School
- Ocoee High School
- Ocoee Middle School
- OCPS ACE K8 School
- Odyssey Middle School
- Olympia High School
- Orlando Gifted Academy School
- Palm Lake Elementary School
- Pershing K8 School
- Pine Hills Elementary School
- Pineloch Elementary School
- Pinewood Elementary School
- Ridgewood Park Elementary School
- Robinswood Middle School
- Rock Lake Elementary School
- Rock Springs Elementary School
- Rosemont Elementary School
- Sally Ride Elementary School
- Sandlake Elementary School
- Shenandoah Elementary School
- Shingle Creek Elementary School
- Southwest Middle School
- Spring Lake Elementary School
- Sun Blaze Elementary School
- Sunrise Elementary School
- Tangelo Park Elementary School
- Thornebrooke Elementary School
- Three Points Elementary School
- Tildenville Elementary School
- Timber Creek High School
- Timber Lakes Elementary School
- Union Park Middle School
- University High School
- Ventura Elementary School
- Waterford Elementary School
- Wedgefield K-8 School
- Wekiva High School
- West Creek Elementary School
- Westpointe Elementary School
- Wheatley Elementary School
- Whispering Oak Elementary School
- Windermere Elementary School
- Windermere High School
- Windy Ridge K8 School
- Winegard Elementary School
- Wolf Lake Middle School
- Wyndham Lakes Elementary School
- Zellwood Elementary School

Aloma Elementary School



Laurel Burch (1945-2007) was a California-based American artist, designer and businesswoman. Early in her career, Burch made jewelry and sold it from a tackle box on the streets of San Francisco. She went on to work in cast metals, wood, porcelain and fabric. Burch's designs are licensed by multiple companies who make and distribute her creations worldwide.

Apopka Elementary School



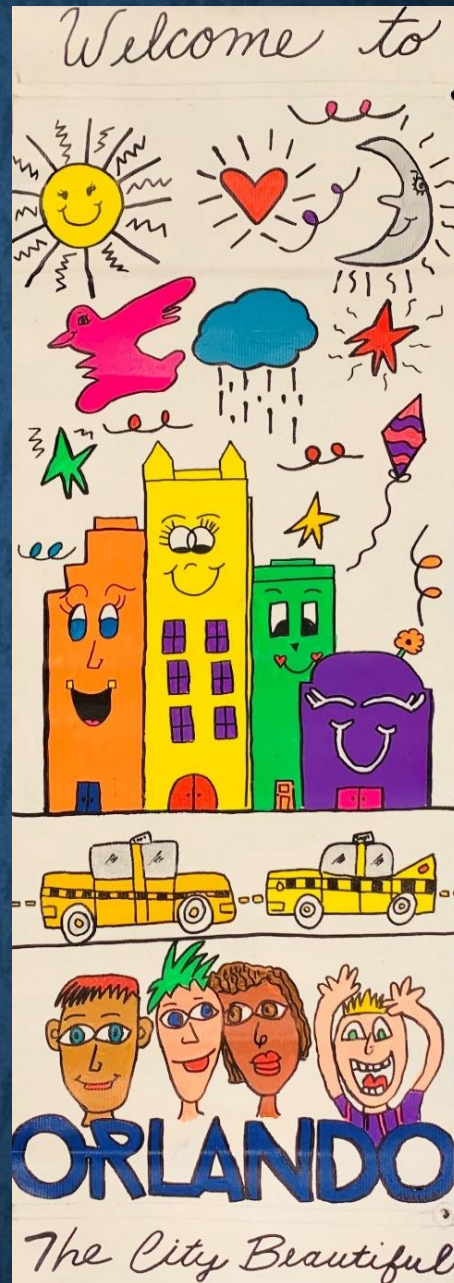
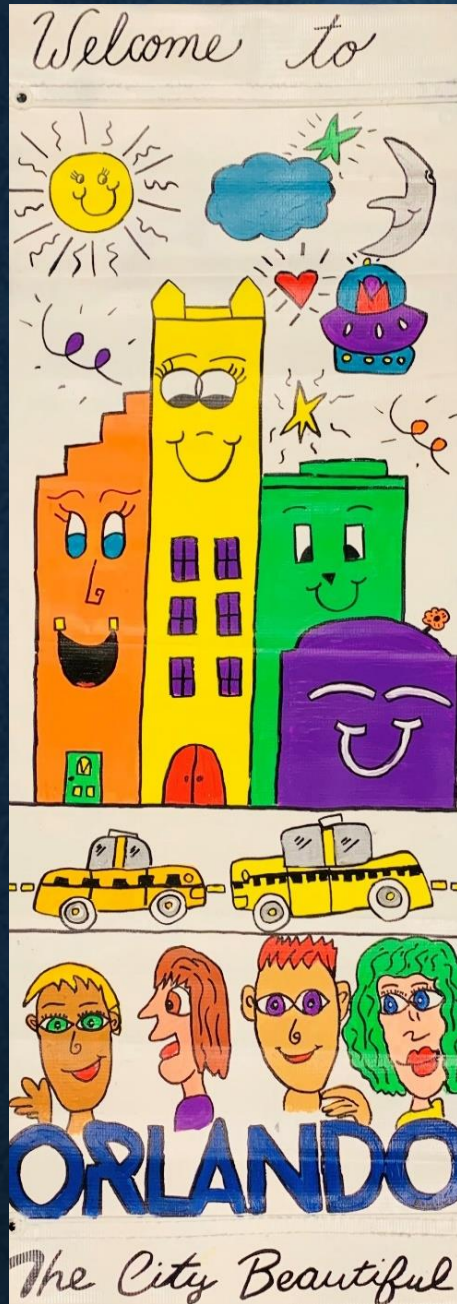
Kara Walker (born 1969) is a contemporary African-American artist who lives and works in New York. She is a painter, printmaker, installation artist, and film-maker who explores race, gender, sexuality, violence and identity throughout American history. Her works are often filled with brutal imagery and illustrate the country's origins of slavery. Walker is known for the silhouetted narratives that she creates by cutting out and affixing black or white paper directly to gallery walls and utilizing light projectors to cast viewers' own shadows.

Arbor Ridge K8 School



Roy Lichtenstein (1923-1997) was an American Pop artist known for his paintings and prints which referenced commercial art and popular culture icons like Mickey Mouse. Mining material from advertisements and comics, he brought commercial art into the gallery. Lichtenstein rendered flat, single-color Ben-Day dots by hand using paint and stencils. By embracing "low" art such as comic books and popular illustration, Lichtenstein became one of the most important figures in the Pop art movement.

Avalon Elementary School



James Rizzi (1950-2011) was an American Pop artist best known for his vibrant, youthful graphics and his three-dimensional prints. He was the official artist for the 1996 Olympic Games in Atlanta, adorning the famous logo with his noodle-like drawing style. Rizzi was born and raised in New York City. He became well known for developing a method of three-dimensional printmaking by hand-coloring silkscreen prints before affixing cutouts.

Avalon Middle School



Wayne Thiebaud (born 1920) is a West Coast artist widely known for his still lifes of edible treats and everyday objects such as lipsticks, colorful pastries, hotdogs, lollipops, and the winding streets of San Francisco. Thiebaud bucked artistic trends to create his own vision of the American culture. He uses heavy pigment and exaggerated colors to depict subjects. Thiebaud is associated with the pop art movement because of his interest in objects of mass culture.

Azalea Park Elementary School



Romero Britto (born 1963) is a Brazilian artist, painter, serigrapher and sculptor currently living in Miami, FL. His distinct graphic style blends Pop Art with Cubist-like abstraction. He has found commercial success through work with brand campaigns. Britto combines elements of cubism, pop art and graffiti painting in his work. He is known for using vibrant colors and bold patterns to visually express hope, dreams and happiness.

Baldwin Park Elementary School



Charley Harper (1922-2007) was a Cincinnati-based American Modernist artist. He was best known for his highly stylized wildlife prints, posters and book illustrations. A conservationist as well as an artist, Harper revealed the unique aspects of his wildlife subjects through highly stylized geometric reduction.

Bay Lake Elementary School



Gustav Klimt (1862-1918) was an Austrian symbolist painter whose patterned paintings came to define the Art Nouveau movement in Vienna. A master of symbolism, Klimt's primary subject was the female body. Klimt is noted for his paintings, murals, sketches, and other objects d'art. He was one of the most prominent members of the Vienna Secession movement.

Bonneville Elementary School



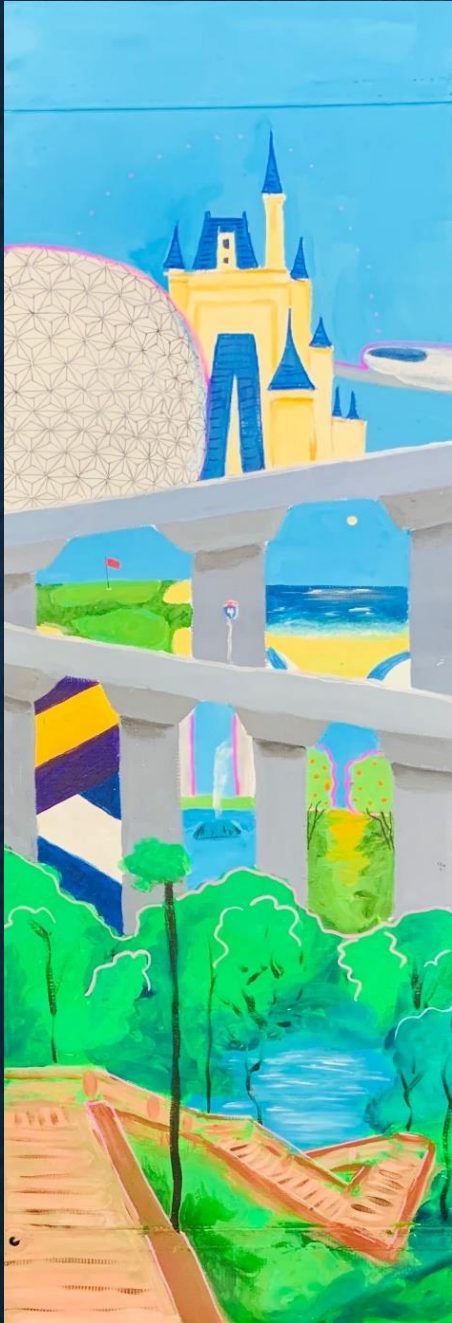
Chris Uphues (born 1971) is a painter, street artist and designer living in Brooklyn, NY. He is best known for his signature hearts that can be found throughout Chicago, New York and Los Angeles. His art is inspired by a range of popular references including comics from the 1950s and 1960s, Walt Disney, Osamu Tezuka, chinese opera, persian calligraphy, and hindu art. Uphues has mid-western roots, spending earlier years in Chicago but New York City charmed him away.

Boone High School



David Hockney (born 1937) is one of the most influential British artists of the 20th century. A pioneer of the British Pop Art movement, he gained recognition for his semi-abstract paintings. A versatile artist, Hockney has produced work in almost every medium—including full-scale opera set designs, prints, and drawings using cutting-edge technology such as fax machines, laser photocopiers, computers, and even iPhones and iPads. Today Hockney alternates living between Yorkshire, United Kingdom, and Los Angeles, California.

Boone High School



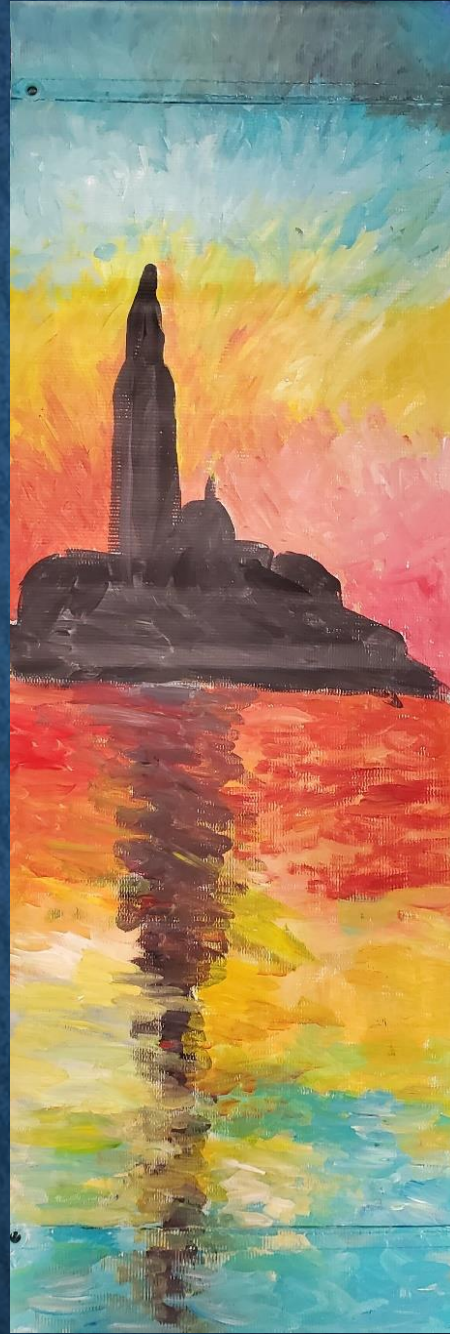
David Hockney (born 1937) is one of the most influential British artists of the 20th century. A pioneer of the British Pop Art movement, he gained recognition for his semi-abstract paintings. A versatile artist, Hockney has produced work in almost every medium—including full-scale opera set designs, prints, and drawings using cutting-edge technology such as fax machines, laser photocopiers, computers, and even iPhones and iPads. Today Hockney alternates living between Yorkshire, United Kingdom, and Los Angeles, California.

Camelot Elementary School



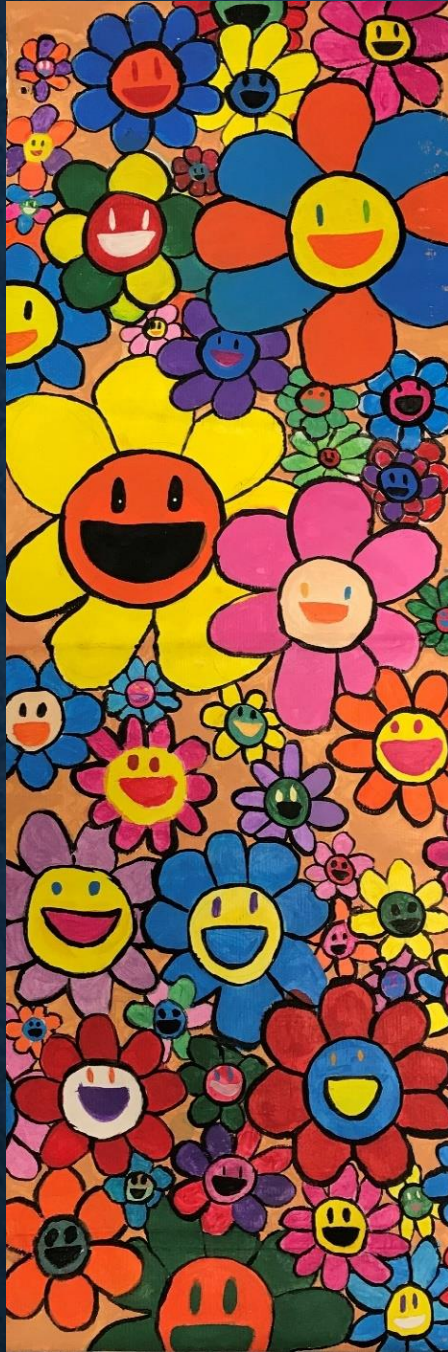
Vincent Van Gogh (1853-1890) was a Dutch post-impressionist painter who is among the most famous and influential figures in the history of Western art. In just over a decade, Van Gogh produced over 2,100 works of art. His works are characterized by vivid palettes and lively brushwork, often featuring depictions of street scenes, sunflowers and portraits. It was during a dark period of his life that Van Gogh famously cut off his own ear in a fit of mental anguish.

Castleview Elementary School



Claude Monet (1840-1926) was a French painter known for his pioneer role in the development of Impressionism. He was concerned with conveying atmosphere and light with broken brushstrokes and complementary colors. Monet was interested in portraying the French countryside by painting the same scene many times in order to capture the changing of light and the passing of the seasons. The term Impressionism is derived from the title of his painting *Impression, Sunrise*.

Chain of Lakes Middle School



Takashi Murakami (born 1962) is a Japanese contemporary artist known for blurring the boundary between fine and commercial art. He is one of the most acclaimed artists to emerge from postwar Asia. He combined Classical Japanese art with contemporary Japanese pop culture in what has become known as his innovative “Superflat” aesthetic. Murakami is known for his use of a boldly graphic and colorful anime and manga cartoon style. Murakami has established himself as a pioneer of promoting art as a brand.

Cheney Elementary School



Paul Cézanne (1839-1906) was a French Post-Impressionist painter. His work formed the bridge between late 19th-century Impressionism and the early 20th-century's Cubism. He depicted form and light with hatched together brushstrokes of modulated color and bold outlines. Cézanne is renowned for his radiant landscapes, intense portraits, and complex still lifes.

Clay Springs Elementary School



Wassily Kandinsky (1866-1944) was a Russian painter and art theorist generally credited as a pioneer of abstract art. His vibrant abstract paintings paved the way for Non-Objective Art. He often described color as sound, using musical terminology to title several of his most famous works. Kandinsky exploited the evocative interrelation between color and form to create an aesthetic experience that engaged the sight, sound, and emotions of the public.

College Park Middle School



Romero Britto (born 1963) is a Brazilian artist, painter, serigrapher and sculptor currently living in Miami, FL. His distinct graphic style blends Pop Art with Cubist-like abstraction. He has found commercial success through work with brand campaigns. Britto combines elements of cubism, pop art and graffiti painting in his work. He is known for using vibrant colors and bold patterns to visually express hope, dreams and happiness.

Colonial High School



Rene Magritte (1898-1967) was a Belgian Surrealist artist and one of the most enduringly influential members of the Surrealist movement. He became well known for creating witty and thought-provoking images, often depicting ordinary objects in unusual contexts. Magritte challenged the observers' perceptions of reality. His work has influenced pop art, minimalist art and conceptual art.

Conway Middle School



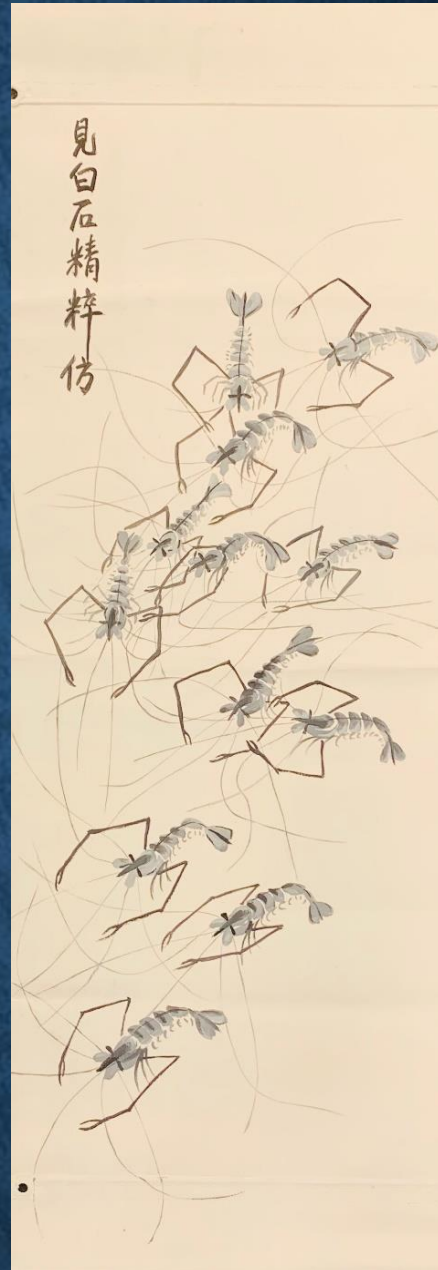
Keith Haring (1958-1990) was an American artist and social activist whose pop art and graffiti-like work grew out of the New York City street culture of the 1980's. His work grew to popularity from his spontaneous drawings in the subways and sidewalks of NYC where he would use chalk to outline figures, dogs, and other stylized images on blank black advertising-space. Haring's later work often addressed political and societal themes. He is known as an American graffiti artist, sculptor, and muralist.

Cypress Creek High School



J. Charles Demuth (1883-1935) was an American artist from Pennsylvania. He was a titan of American Modernism who developed a style of painting known as Precisionism. He is best known for his luminous watercolors of flowers, figures, and architecture. DeMuth employed vivid hues, exacting lines, and angular forms in his works.

Deerwood Elementary School



Qi BaiShi (1864-1957) was a self-taught painter and one of the most influential artists to emerge from 19th-Century China. His favorite subjects included plants, animals, scenery, figures, vegetables and other every day items. He painted with whimsical, free-flowing watercolors. In his later years, many of Qi BaiShi's works depicted mice, shrimp or birds.

Dillard Street Elementary School



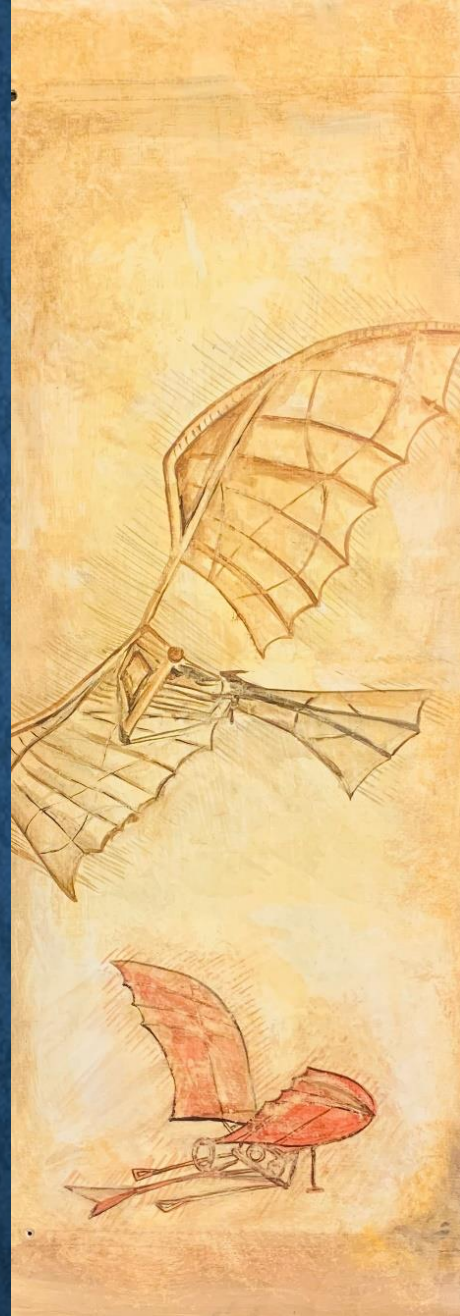
George Ward Tjungurray (born 1943) is an Australian Aboriginal artist who began painting for the Papunya Tula Artists around 1976. His works are recognized by the dense lines that create structures surround by rows of dots, giving the paintings great power. He employs a bright color palette of reds, deep browns, greens and oranges. Today, Tjungurray is one of the most highly regarded indigenous painters still working.

Discovery Middle School



Pablo Picasso (1881-1973) was a Spanish painter, sculptor, printmaker, ceramicist, stage designer, poet, and playwright. He was one of the most influential artists of the 20th century. His ingenious use of form, color, and perspective profoundly impacted later generations of painters. Picasso is known for co-founding the Cubist movement. He was inspired by African and Iberian art and developments in the world around him. Picasso was a prolific innovator of art forms and his works are often categorized into periods.

Dr. Phillips Elementary School



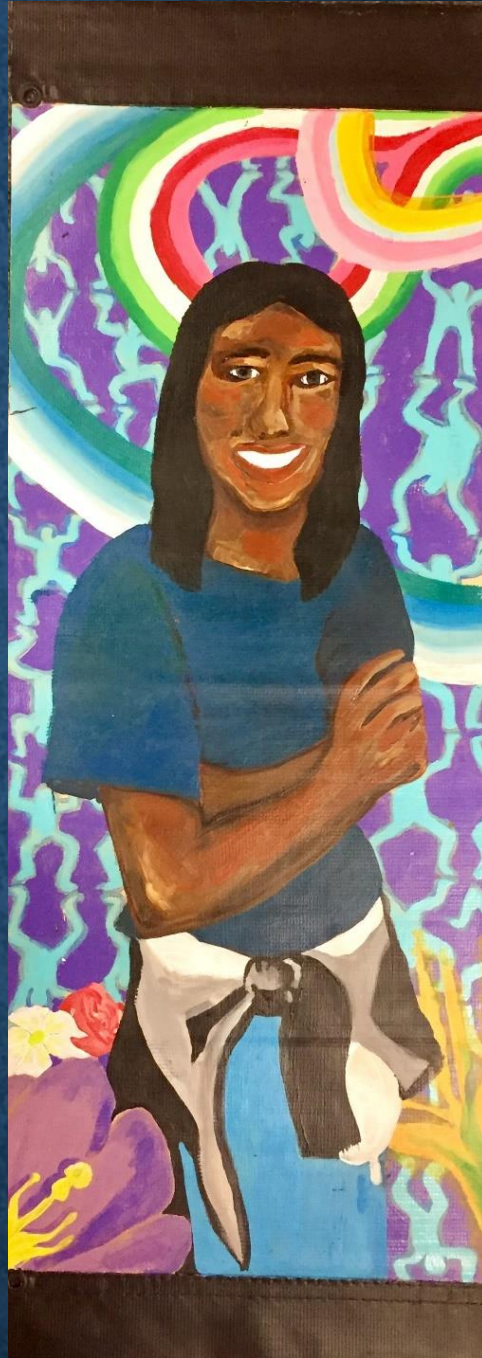
Leonardo da Vinci (1452-1592) was an Italian artist considered among the greatest Renaissance painters in the history of Western art. Da Vinci is a founding father of the High Renaissance style and is admired for his virtuosity as a painter and draughtsman. His use of vanishing point, the soft blurring effect in his sfumato method, his understanding the relationship between light and dark, and his enigmatic facial expressions created a mesmerizing and realistic quality to his paintings that had never before been seen.

Dr. Phillips High School



The Florida Highwaymen. In the early 1950's through the 1980's, a group of twenty-six African-American landscape artists. Under the tutelage of a prominent white artist, A.E. "Bean" Buckus, painted landscapes of undeveloped Florida and traveled along the coast selling from the trunk of their car. Despite facing many racial and cultural barriers, the Florida Highwaymen created a body of work of over 200,000 paintings.

Dr. Phillips High School



Kehinde Wiley (born 1977) is an Nigerian-American painter based in New York City. He is quite literally changing the face of portraiture with his sensitive, vibrant, and political portrayals of black folk. Wiley fuses traditional formats and motifs with modern modes of representations. He selects works from old masters and replaces historical figures with handsome young black men. Wiley was the first black artist to paint an official portrait of a president (President Obama) for the National Portrait Gallery.

Eagle Creek Elementary School



Johannes Vermeer (1632-1675) was a Dutch Baroque Period painter who specialized in domestic interior scenes of middle class life. A slow and methodical painter, Vermeer produced relatively few paintings. It is believed that almost all of his paintings were apparently set in two small rooms in his house in Delft. Vermeer gained most of his fame after his death in 1675.

Eagle's Nest Elementary School



Gerhard Richter (born February 1932) is a German visual artist who is known for a prolific and stylistically varied exploration of the medium of painting, often incorporating and exploring the visual effects of photography. In the early 1960s, Richter began to create large-scale photorealist copies of black-and-white photographs rendered in a range of grays, and innovated a blurred effect in which portions of his compositions appear smeared or softened. He is regarded as one of the most important contemporary German artists of his time.

East Lake Elementary School



Kelsey Montague (born 1985) is a New York based mural artist who is known for her wing-inspired artworks on the walls of major cities like Buenos Aires and New York. Her interest is in exploring how public art, interactive art and social media intersect. Montague encourages viewers to express themselves on social media through her art.

East River High School



John Singer Sargent (1856-1925) was born in Florence to American parents. He became the premiere portraitist of his generation and was well-known for depictions of figures in high society from Paris, London and New York. He updated a centuries-old tradition by using vibrant Impressionistic strokes as well as untraditional compositional solutions in order to capture the character of the sitter. Additionally, he painted murals commissioned by governmental officials in the US and the United Kingdom.

Eccleston Elementary School



The Florida Highwaymen. In the early 1950's through the 1980's, a group of twenty-six African-American landscape artists. Under the tutelage of a prominent white artist, A.E. "Bean" Buckus, painted landscapes of undeveloped Florida and traveled along the coast selling from the trunk of their car. Despite facing many racial and cultural barriers, the Florida Highwaymen created a body of work of over 200,000 paintings.

Eccleston Elementary School



The Florida Highwaymen. In the early 1950's through the 1980's, a group of twenty-six African-American landscape artists. Under the tutelage of a prominent white artist, A.E. "Bean" Buckus, painted landscapes of undeveloped Florida and traveled along the coast selling from the trunk of their car. Despite facing many racial and cultural barriers, the Florida Highwaymen created a body of work of over 200,000 paintings.

Edgewater High School



Diego Rivera (1886-1957) was a prominent Mexican painter. He held a conviction to the value of public art and found his calling as a muralist. He painted narrative scenes championing the indigenous Mexican culture. Rivera saw the artist as a craftsman at the service of community which greatly influenced the emergence of American public art. His signature earth-toned, Social Realist style can be found in murals in Mexico City, Chapingo, and Cuernavaca, Mexico; and San Francisco, Detroit, and New York City, United States.

Endeavor Elementary School



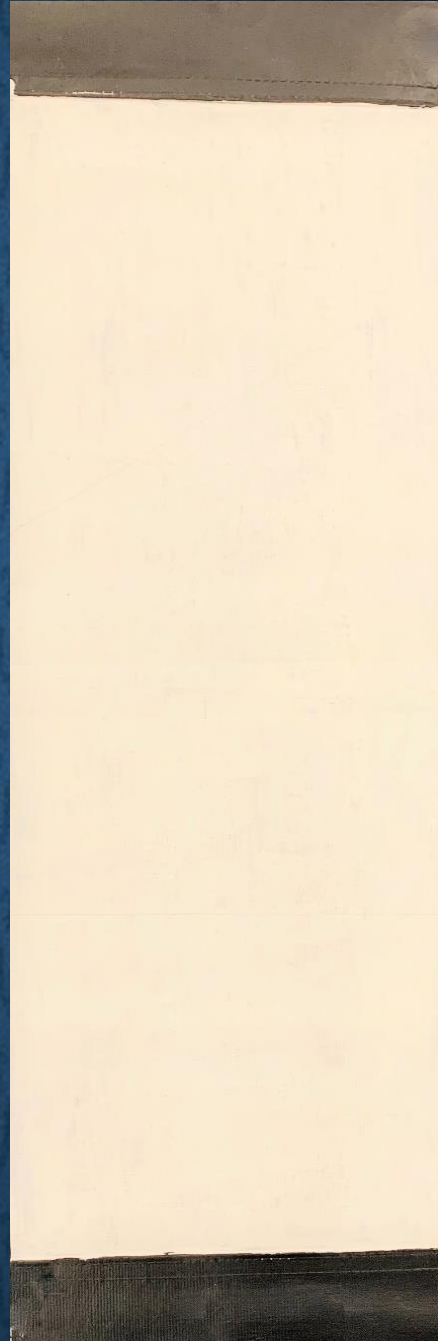
Juan Gris (1887-1927) was a Spanish painter born in Madrid who lived and worked in France most of his life. He originally trained in math and physics which accounts for his highly mathematical approach to Cubism. His works are among the movement's most distinctive. Gris' paintings rendered discrete forms with precision and exactitude, the resulting images almost resembling technical drawings. He combined different viewpoints of a subject in one image requiring a new way of seeing by the viewer.

Evans High School



Thomas Evans, a.k.a. “Detour” (born 1984), has been a creative force in the Denver art scene for over a decade. He specializes in large scale public art, interactive visuals, portraiture, immersive spaces and creative directing. Originally Detour was largely inspired by the world of breakdancing and hip-hop. His goal is to create work where art and innovation meet, such as experimentation in visual art, music, and interactive technologies. Recently, Detour has gained international pop-cultural recognition.

Evans High School



Thomas Evans, a.k.a. “Detour” (born 1984) specializes in large scale public art, interactive visuals, portraiture, immersive spaces and creative directing. His goal is to create work where art and innovation meet, such as experimentation in visual art, music, and interactive technologies.

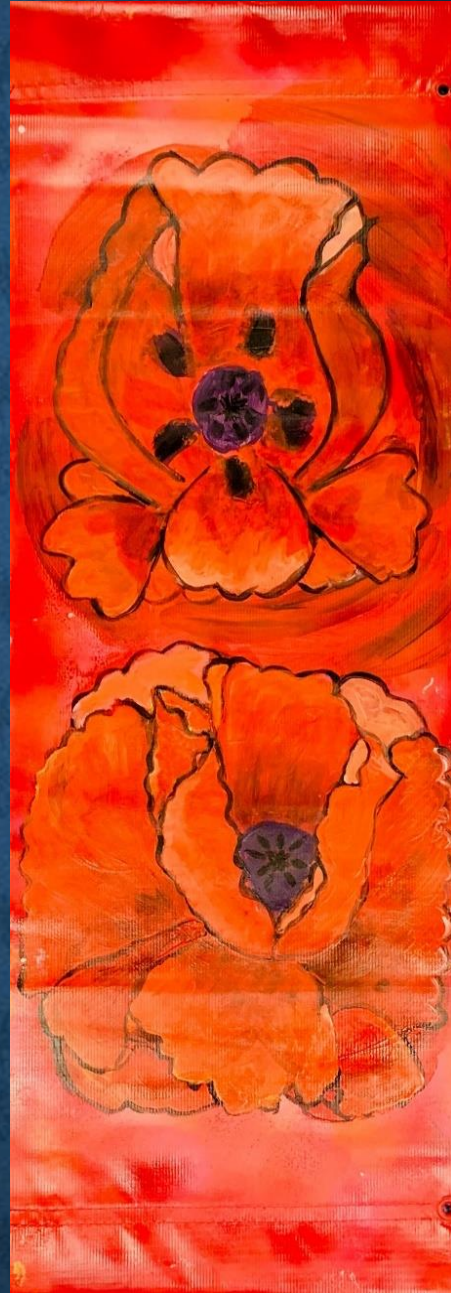
Robert Rauschenberg (1925-2008) was an American painter and graphic designer whose early work anticipated the pop art movement. Rauschenberg is best known for his combination of non-traditional materials and objects in his works.

Forsyth Woods Elementary School



Sol LeWitt (1928-2007) was an iconic American artist whose work helped establish both Minimalism and Conceptual Art. Coming to fame in the late 1960s with his wall drawings and sculptures, but was prolific in a wide range of media. LeWitt's sculptures were variations on geometric shapes, constructed from steel, polyurethane, or concrete, often featuring stacked cubes without sides. LeWitt's art is not about the singular hand of the artist; it is the idea behind each work that surpasses the work itself.

Frangus Elementary School



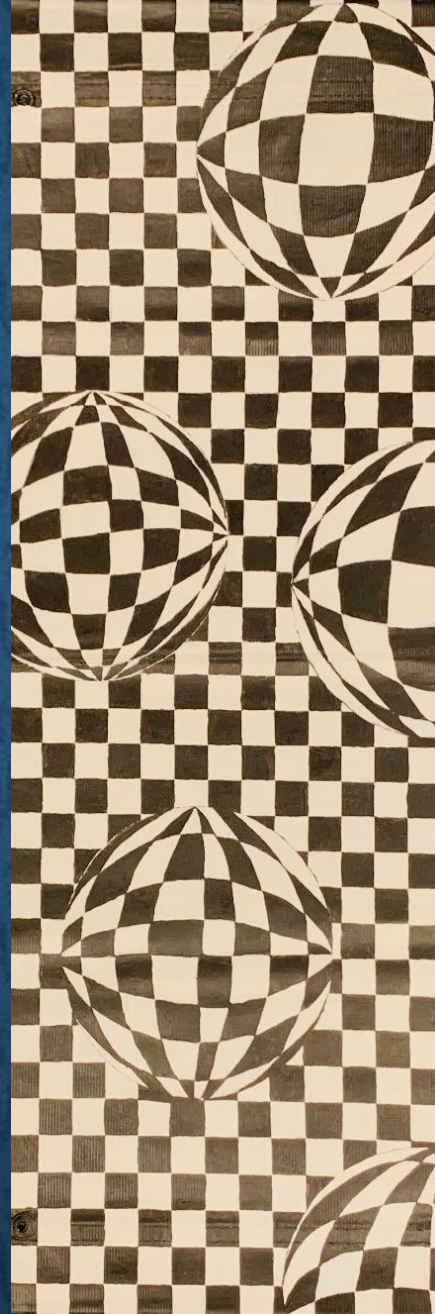
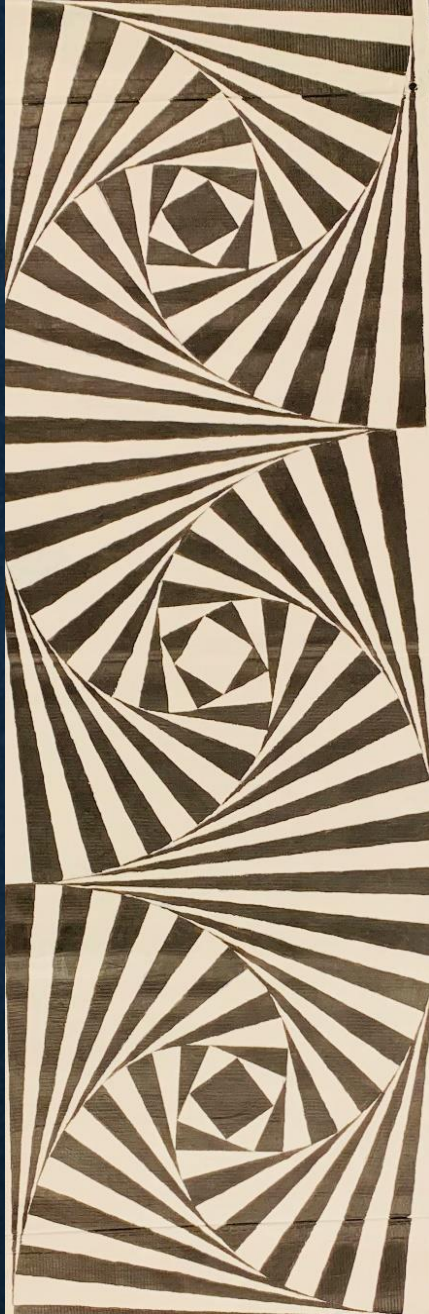
Georgia O'Keeffe (1887-1986) was widely considered one of the greatest 20th-century American artists. She was best known for her paintings of enlarged flowers, New York skyscrapers, and New Mexico landscapes. She spent 70 years making art. O'Keeffe has been recognized as the “Mother of American modernism”.

Glenridge Middle School



Wayne Thiebaud (born 1920) is a West Coast artist widely known for his still lifes of edible treats and everyday objects such as lipsticks, colorful pastries, hotdogs, lollipops, and the winding streets of San Francisco. Thiebaud bucked artistic trends to create his own vision of the American culture. He uses heavy pigment and exaggerated colors to depict subjects. Thiebaud is associated with the pop art movement because of his interest in objects of mass culture.

Gotha Middle School



Victor Vasarely (1906-1997) was a Hungarian-French artist who is credited as being the grandfather and leader of the Op Art movement. He created illusions of spatial depth and optical complexity. Through precise combinations of lines, geometric shapes, colors, and shading, Vasarely created eye-popping paintings. A believer in the democratization of art, he supported a mass circulation of his designs on prints, posters, and fabrics. Their hallucinatory effects symbolized the spirit of the sixties.

Hiawassee Elementary School



Wichie Torres (1952-2020) was a Puerto Rican oil canvas painter. He is best known as a folk artist, creating scenes of everyday life that characterizes the Afro-Caribbean roots of Puerto Rico. Torres' main themes are people and daily life reflecting Puerto Rican scenes. His works are full of vibrant, intense and provocative colors applied with rhythmic strokes.

Hidden Oaks Elementary School



Paul Gauguin (1848-1903) was a French post-Impressionist artist. He is a pioneer of the Symbolist art movement and renowned for his art depicting Tahitian women. Although Gauguin began his artistic career with the Impressionists in Paris, he made a move to French Polynesia in search of a paradise where he could create pure, “primitive” art. Gauguin was an important figure in the Symbolist movement as a painter, sculptor, printmaker, ceramist, and writer.

Hillcrest Elementary School



Robert Wyland (born 1956), commonly known as Wyland, is an American artist who is best known for his large outdoor murals featuring images of sea life. He rose to fame painting life-size murals of whales. Today, Wyland is an internationally renowned marine life artist. He is an innovative painter, sculptor, writer, photographer, philanthropist, and filmmaker who has a passion for marine wildlife and a commitment to raising awareness about environmental conservation.

Howard Middle School



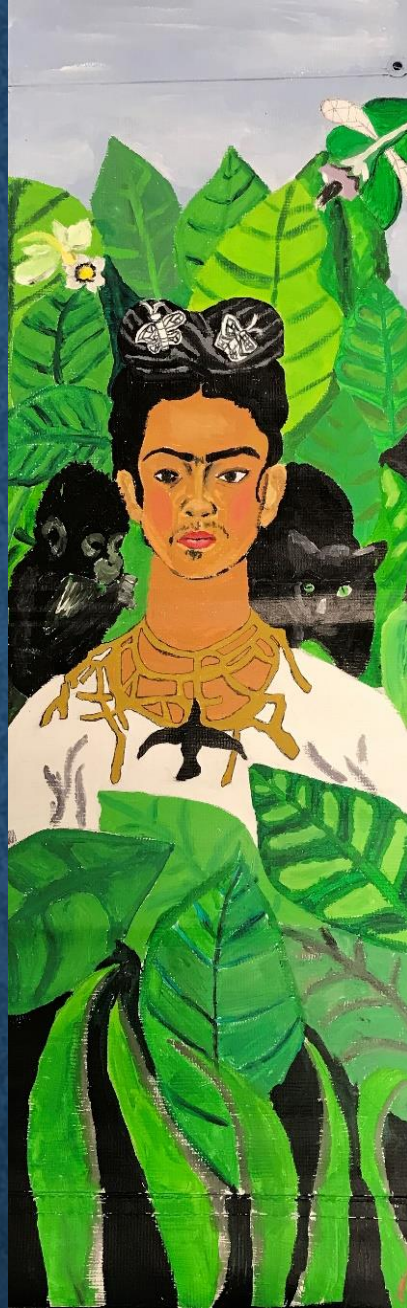
Louis Comfort Tiffany (1848-1933) was an American artist and designer who worked in decorative arts. Although he is best known for his work in stained glass his designs included lamps, glass mosaics, blown glass, ceramics, jewelry, enamels and metalwork. Tiffany is most associated with the Art Nouveau and Aesthetic movements. He pushed the boundaries of glasswork, creating innovative new techniques that allowed Tiffany to achieve colors and a level of detail previously impossible.

Hungerford Elementary School



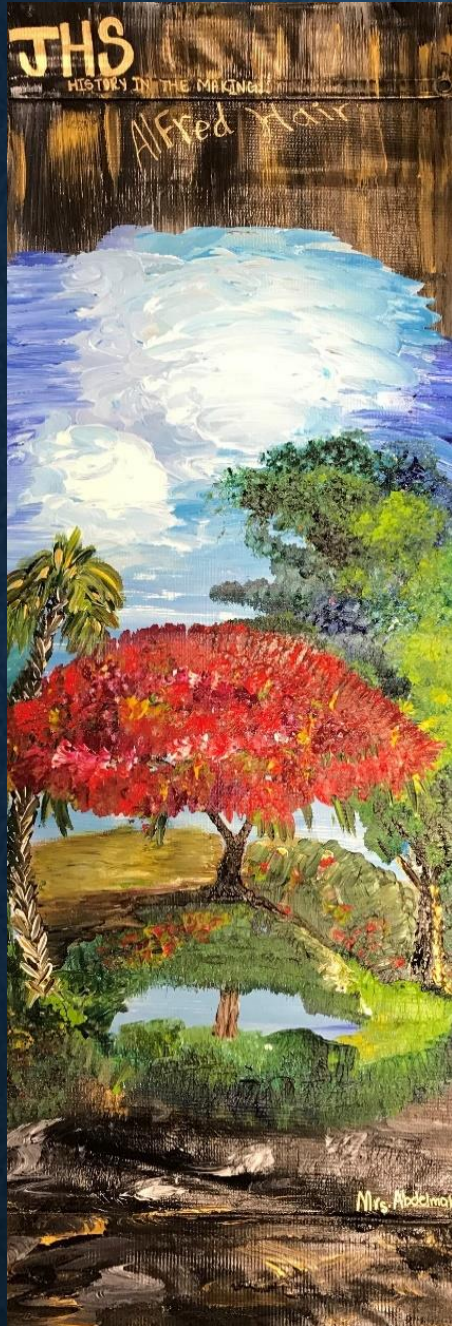
George Rodrigue (1944-2013) was an American artist born in Louisiana. He captured lush Louisiana landscapes, small town heroes, and Cajun culture in his paintings. His paintings often include moss-clad trees. Rodrigue's style shifted when he dropped the Cajun influence altogether and began painting a series focused on a single subject.

Jackson Middle School



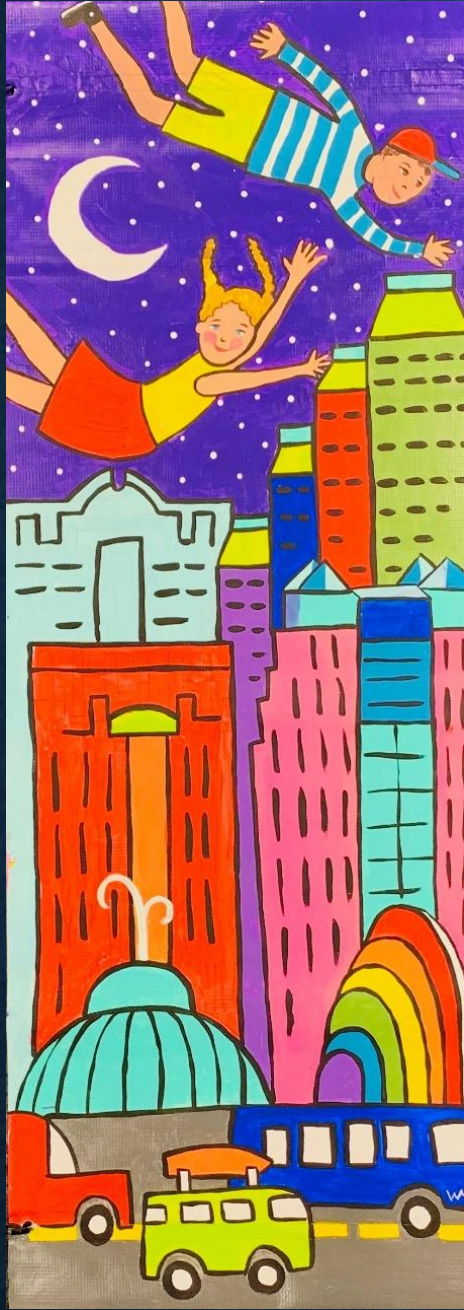
Frida Kahlo (1907-1954) was a celebrated Mexican painter known for her complex self-portraits. She was inspired by pre-Columbian artifacts and Mexican folk art. Through this folk art style, Kahlo explored questions of identity, gender, class, and race in Mexican society. Kahlo made it legitimate for women to outwardly display their pains and frustrations and to thus make steps towards understanding them. It became crucial for women artists to have a female role model and this is the gift of Frida Kahlo.

Jones High School



The Florida Highwaymen. In the early 1950's through the 1980's, a group of twenty-six African-American landscape artists. Under the tutelage of a prominent white artist, A.E. "Bean" Buckus, painted landscapes of undeveloped Florida and traveled along the coast selling from the trunk of their car. Despite facing many racial and cultural barriers, the Florida Highwaymen created a body of work of over 200,000 paintings.

Keene's Crossing Elementary School



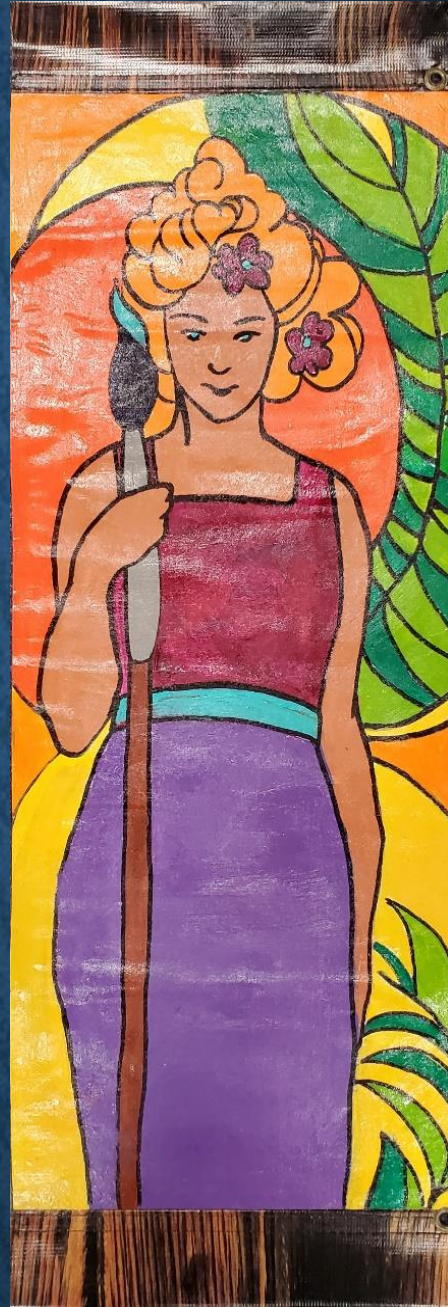
Faith Ringgold (born 1930) is an African-American artist. Often associated with her ties to feminism, post colonialist critique, and activism, she addresses controversial subject matter through a variety of media such as painting, writing, mixed media sculpting and performance art. She is best known for her narrative quilts. Coming out of Harlem, her work as an artist, activist and educator influenced both the art world and communities beyond the art world.

Lake Como K8 School



Jen Stark (born 1983) is an American artist who was born in Miami, FL and lives and works in Los Angeles, California. Stark creates intricate paper sculptures and wall pieces, as well as drawings, installations, murals, and animations. She uses a rainbow explosion of color. Often, her works resemble things in nature such as tree rings, vortices, and clusters of microorganisms. She is best known for her cut-paper pieces.

Lake Como K8 School



Alphonse Mucha (1860-1939) was a Czech artist known for his unique Art Nouveau illustrations and designs. He was a painter, illustrator and graphic artist, living in Paris during the Art Nouveau period, best known for his distinctly stylized and decorative theatrical posters. He produced illustrations, advertisements, decorative panels, and designs, which became among the best-known images of the period. Much of Mucha's work depicts beautiful young women draped in Neoclassical robes set amidst flowers and feathers and rendered in pale pastels.

Lake George Elementary School



Paul Klee (1879-1940) was a Swiss artist and important figure in the development of early 20th-century avant-garde art. His highly individualized style was influenced by Surrealism, Cubism and Expressionism. Klee was a natural draftsman who deeply explored color theory. His works reflect his dry humor and sometimes childlike perspective, his personal moods and beliefs, and his musicality.

Lake Nona Middle School



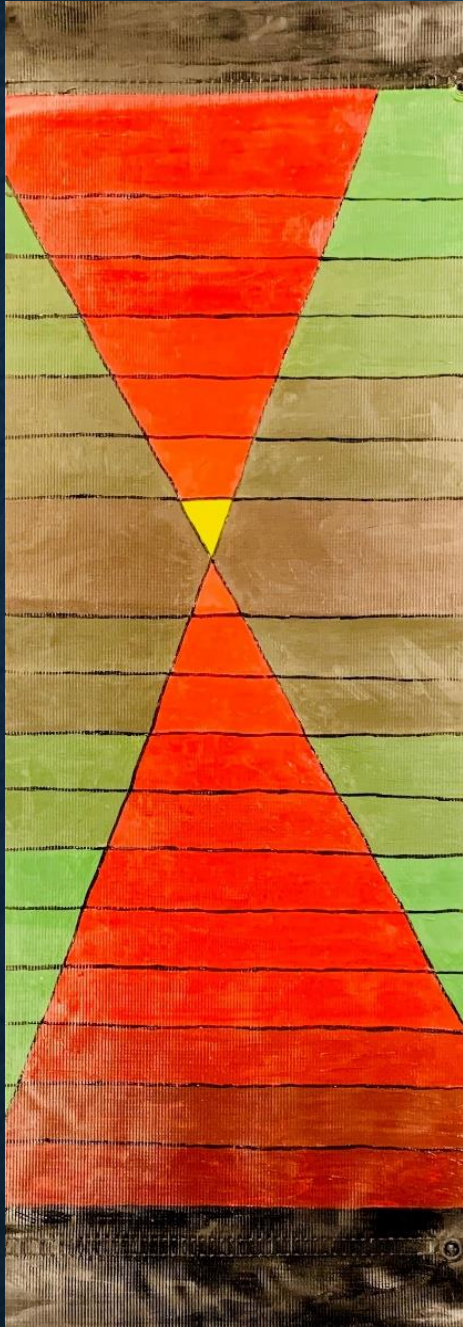
Alexander Calder (1898-1976) was an American artist best known for his invention of the mobile and his wire sculptures. He changed the course of modern art by developing an innovative method of sculpting, bending, and twisting wire to create three-dimensional “drawings in space.” The earliest mobiles moved by motors, but Calder soon abandoned these mechanics and designed pieces that moved by air currents or human interaction. Calder injected wit into serious art and introduced the concept of the artist as a performer as much as a maker of art.

Lake Nona High School



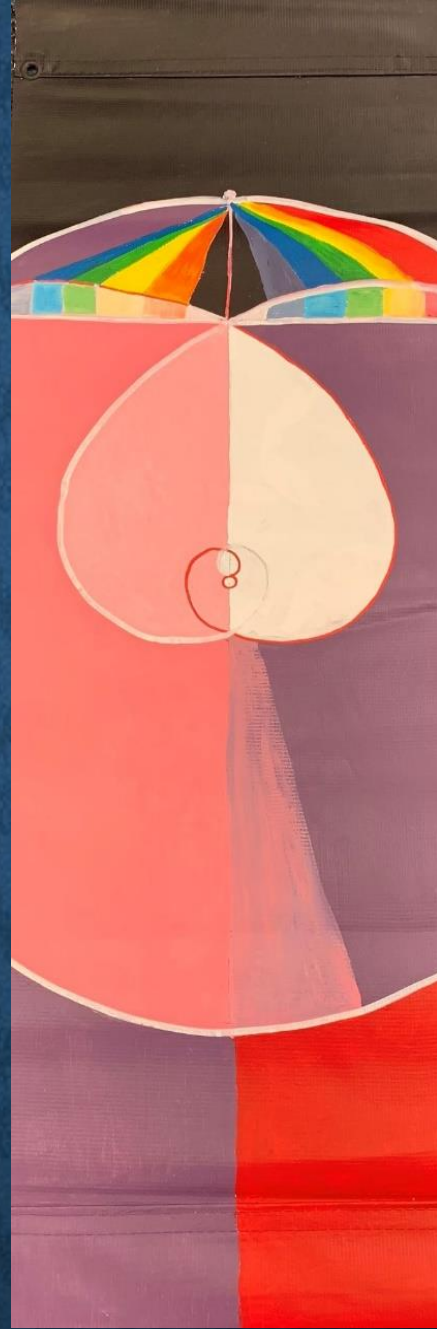
Paul Klee (1879-1940) was a Swiss artist and important figure in the development of early 20th-century avant-garde art. His highly individualized style was influenced by Surrealism, Cubism and Expressionism. Klee was a natural draftsman who deeply explored color theory. His works reflect his dry humor and sometimes childlike perspective, his personal moods and beliefs, and his musicality.

Lake Sybelia Elementary School



Paul Klee (1879-1940) was a Swiss artist and important figure in the development of early 20th-century avant-garde art. His highly individualized style was influenced by Surrealism, Cubism and Expressionism. Klee was a natural draftsman who deeply explored color theory. His works reflect his dry humor and sometimes childlike perspective, his personal moods and beliefs, and his musicality.

Lake Weston Elementary School



Hilma af Klint (1862-1944) was a Swedish artist and mystic whose paintings were among the first Western abstract art. Her works combined many aspects of scientific illustration, geometry, and color theory. She belonged to a group called "The Five", a circle of women who shared her belief in the importance of trying to make contact with the so-called "High Masters". Her paintings were a visual representation of complex spiritual ideas.

Lake Whitney Elementary School



Piet Mondrian (1872-1944) was a Dutch painter and theoretician who is known for being one of the pioneers of 20th century abstract art. Over his lifetime, he changed his artistic direction from figurative painting to an increasingly abstract style. Mondrian's work had an enormous impact on 20th century art, influencing not only the course of abstract painting, but also fields outside of painting such as design, architecture, and fashion.

Lakeville Elementary School



This collage of famous works of art represents the following artists: Katsushika Hokusai (Chinese; 1760-1849), Vincent Van Gogh (Dutch; 1853-1890), Edvard Munch (Norwegian; 1863-1944), Pablo Picasso (Spanish; 1881-1973), Salvador Dali (Spanish; 1904-1989). Collectively, their lives span a period of 220 years, representing varied periods and styles of art.

Laureate Park Elementary School



Romero Britto (born 1963) is a Brazilian artist, painter, serigrapher and sculptor currently living in Miami, FL. His distinct graphic style blends Pop Art with Cubist-like abstraction. He has found commercial success through work with brand campaigns. Britto combines elements of cubism, pop art and graffiti painting in his work. He is known for using vibrant colors and bold patterns to visually express hope, dreams and happiness.

Liberty Middle School



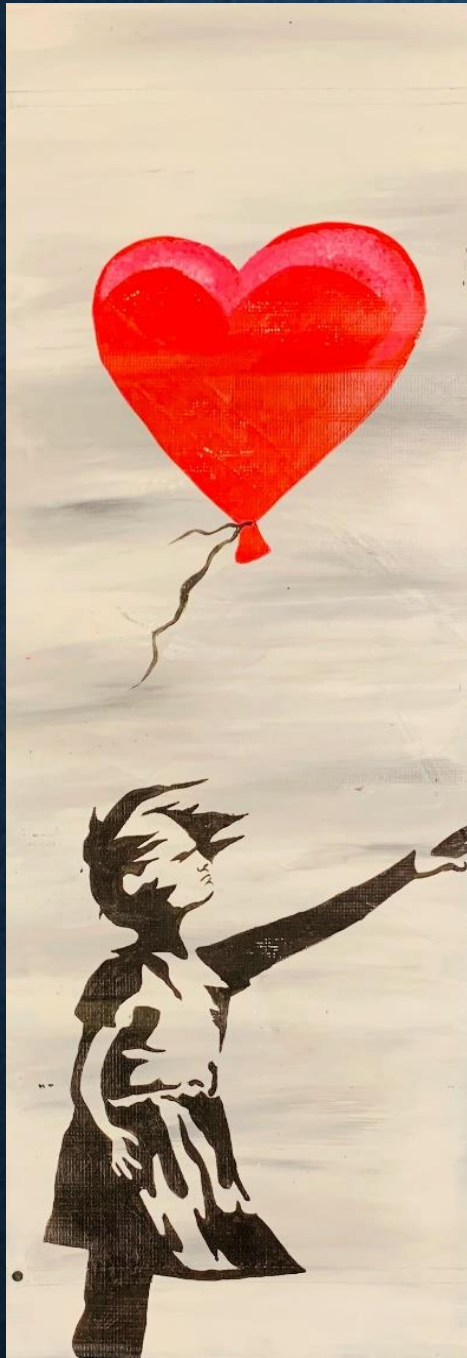
Joan Miro (1893-1983) was a Spanish painter, sculptor, and ceramicist whose work was interpreted as Surrealism. Miro expressed contempt for conventional painting methods as a way of supporting bourgeois society and declared an “assassination of painting”. His innovative use of line, organic shapes, and color represents a major contribution to Surrealism.

Little River Elementary School



Katsushika Hokusai (1760-1849) was a Japanese artist, ukiyo-e painter and printmaker. While Hokusai was prolific and made prints on a range of subjects, it is his landscapes that had the most impact. His prints had a mass appeal as Hokusai interpreted famous sites through the lens of everyday experience. The mood of his prints draws strongly from his focus on seasonal phenomena, fleeting weather conditions or festivities that marked the passing of time.

Lockhart Elementary School



Banksy (born 1974) is a contemporary British street artist and activist who, despite his international fame, has maintained an anonymous identity. There is not much known about the artist, but it is thought that Banksy was born in Bristol, United Kingdom and started his career as a graffiti artist in the city. Among the artist's most famous stunts include the shredding of a painting just as the hammer went down at auction with a \$1.4 million price tag. Most often using spray paint and stencils, Banksy has crafted a signature, immediately identifiable graphic style.

Maitland Middle School



Henri Matisse (1869-1954) was one of the most influential French artists of the twentieth century. His use of unmodulated color, inventive figuration, and decorative patterns helped redefine many of the formal tenets of painting. Matisse was a leading figure of Fauvism, responsible for significant developments in painting and sculpture. In his later years, Matisse created an important body of work in the medium of cut paper collage.

Maxey Elementary School



Pierre Auguste -Renoir (1841-1919) was a French artist and a leading painter in the development of the Impressionist movement. He applied bright pigment with lively brushstrokes that captured flickering light and atmosphere. He is best known for portraiture, figurative work, and a series of bathing women. In his later years, suffering severe rheumatoid arthritis, he painted with a brush tied to his hand.

Memorial Middle School



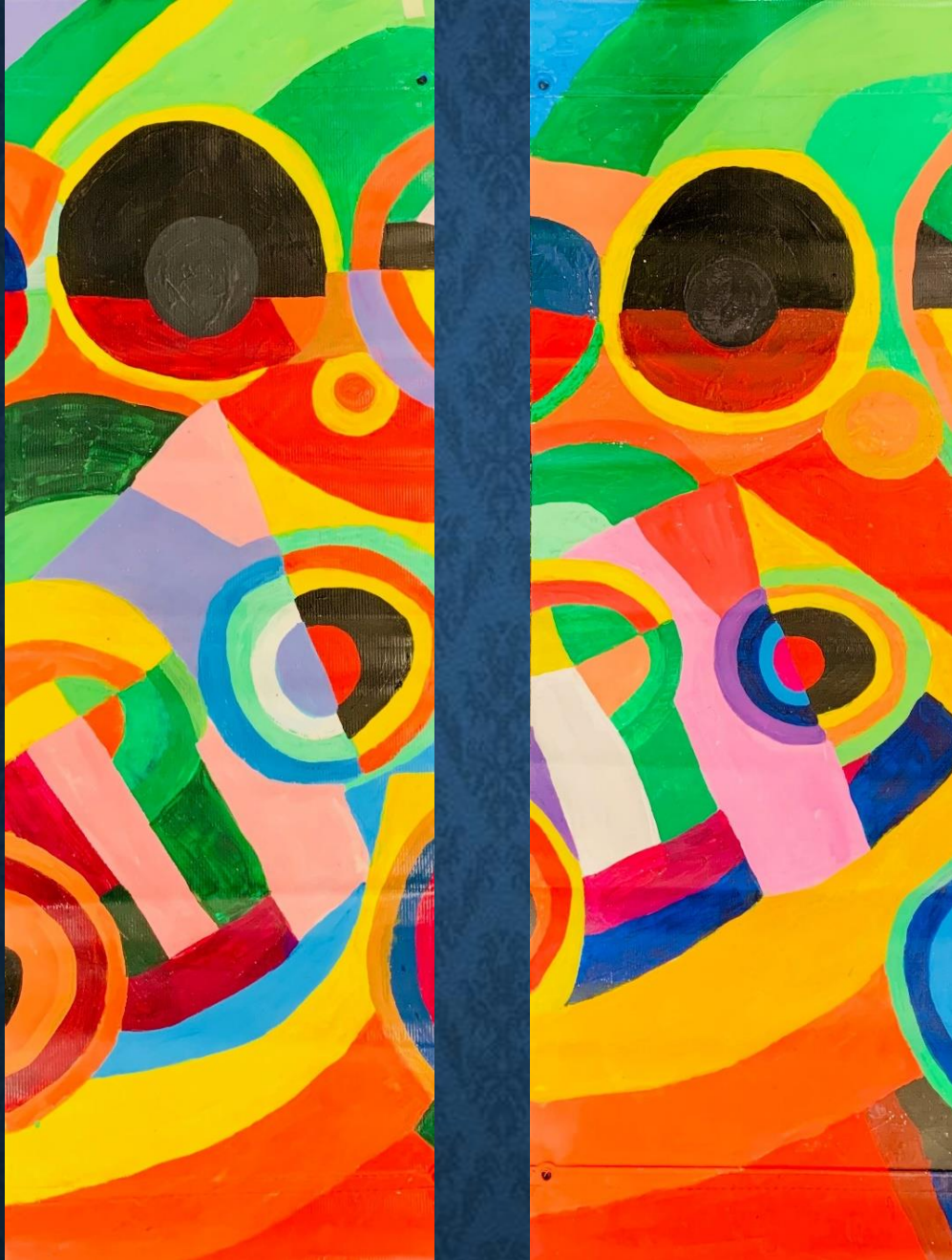
Leonardo da Vinci (1452-1592) was an Italian artist considered among the greatest Renaissance painters in the history of Western art. Da Vinci is a founding father of the High Renaissance style and is admired for his virtuosity as a painter and draughtsman. His use of vanishing point, the soft blurring effect in his sfumato method, his understanding the relationship between light and dark, and his enigmatic facial expressions created a mesmerizing and realistic quality to his paintings that had never before been seen.

Metrowest Elementary School



Henri Matisse (1869-1954) was one of the most influential French artists of the twentieth century. His use of unmodulated color, inventive figuration, and decorative patterns helped redefine many of the formal tenets of painting. Matisse was a leading figure of Fauvism, responsible for significant developments in painting and sculpture. In his later years, Matisse created an important body of work in the medium of cut paper collage.

Moss Park Elementary School



Robert Delaunay (1885-1941) was a French artist who pioneered the transition from Cubism to lyrical abstraction. This new style became known as Orphism. It is noted for its use of strong color and geometric shapes. Later in his life, Delaunay's works became more abstract and were characterized by his experimentation with both depth and tone.

Ocoee Elementary School



Alma Thomas (1891-1978) was an African-American Expressionist painter and art educator. She is best known for her colorful, abstract compositions. Thomas' distinctive color field paintings recall the techniques of Pointillism and Abstract Expressionism. She frequently translated art historical references, natural phenomena, and personal aesthetic through simple compositions of circular and linear form. Thomas primarily lived and worked in Washington, DC.

Ocoee Middle School



Jonathan Green (born 1955) is an African-American artist who is best known for his vibrant depictions of the descendants of enslaved Africans who settled in the South during the 19th century. He is a painter and printmaker and is considered one of the most important contemporary painters of the Southern experience. He learned the Gullah dialect and culture while living in South Carolina. His vividly colored paintings and prints document everyday chores in the Gullah tradition. Currently, Green lives and works in Naples, Florida.

Ocoee High School



Sonia Delaunay (1885-1975) was a Ukrainian-born French artist and designer known for her bold use of colorful geometric patterns. Along with her husband Robert Delaunay and others, she cofounded the Orphism art movement. Her ability to introduce art into regular life by creating and wearing clothing, and living in spaces that were of her own design, can be seen as an early form of performance art. Delaunay became the first living female artist to have a retrospective at the Louvre Museum.

Odyssey Middle School



Tim Burton (born 1958) is an American director, producer, artist, writer, and animator. He is known for dark, gothic, and eccentric horror and fantasy films. However, Tim Burton is an artist before anything else. He is a talented drawer who expresses himself through his art. Quite often, a film is born from a little drawing at the corner of a page. The drawing sets up the tone of the film, the colors of the set and the personality of the characters.

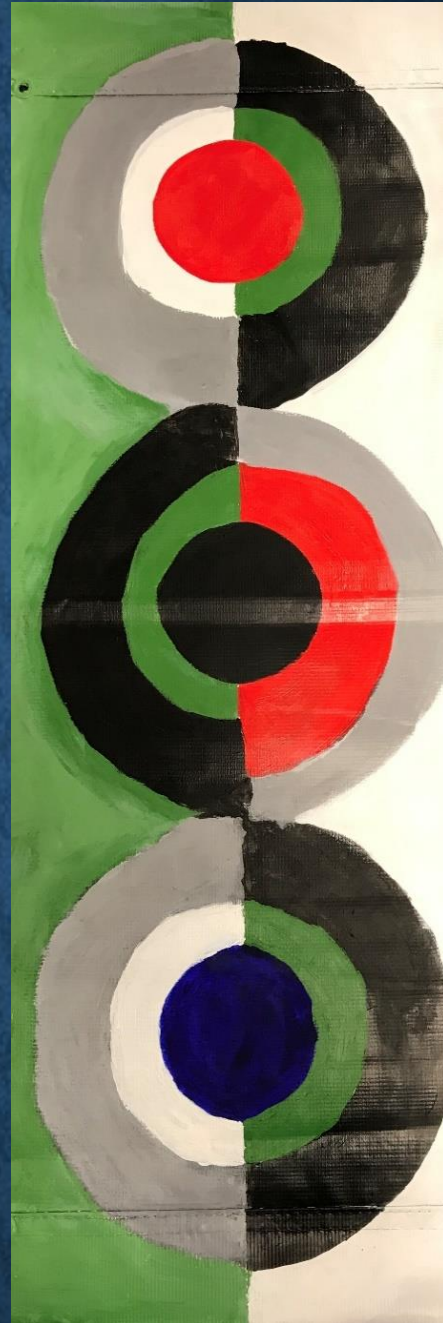
Olympia High School



Mark Rothko (1903-1970) was an American Abstract. Rothko's works include landscapes, still lifes, figure studies, and portraits, but is best known for his canvases featuring large blocks of glowing color.

Joan Miro (1893-1983) was a Spanish painter, sculptor, and ceramicist. Miro's work focused on the use of biomorphic forms, geometric shapes, and abstracted objects. While Miro has been associated with Surrealism and Abstract Expressionism, his work is unique in its own right.

Orlando Gifted Academy



Sonia Delaunay (1885-1975) was a Ukrainian-born French artist and designer known for her bold use of colorful geometric patterns. Along with her husband Robert Delaunay and others, she cofounded the Orphism art movement. Her ability to introduce art into regular life by creating and wearing clothing, and living in spaces that were of her own design, can be seen as an early form of performance art. Delaunay became the first living female artist to have a retrospective at the Louvre Museum.

OCPS Academic Center of Excellence K8



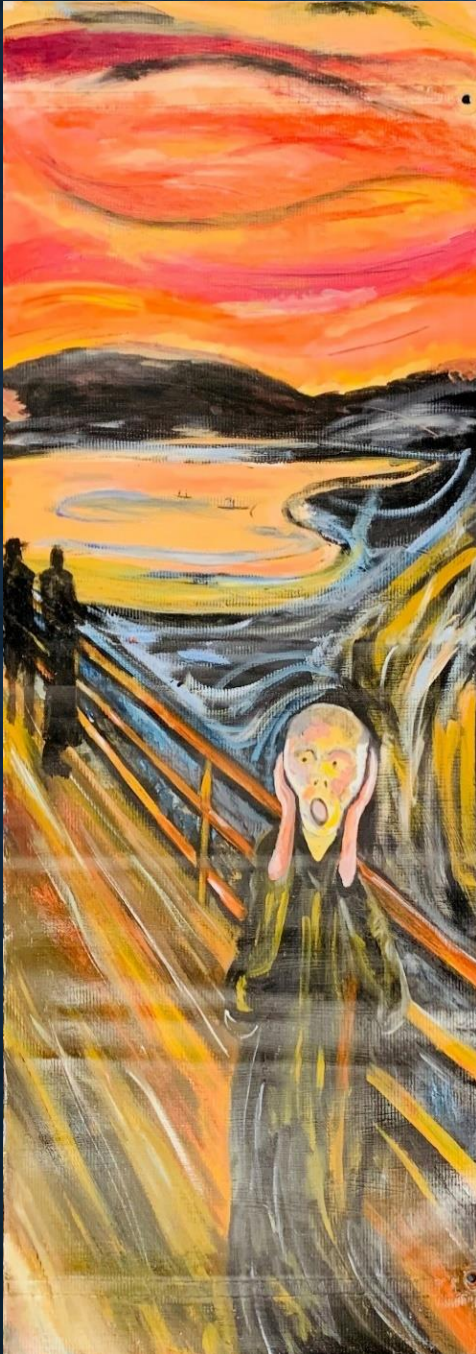
Chuck Close (born 1940) is an American painter, artist and photographer. He is known for his large-scale portraits that he constructs through a grid system, where each square on the canvas corresponds with a squared off cell on the reference photograph. Close's compositions come in to focus the further an observer stands from them. Playing with ideas of scale, color, and form, Close has become famous for this rigorous, gridded application. A catastrophic spinal artery collapse left him severely paralyzed, but he continued to paint by using a brush strapped to his wrist.

Palm Lake Elementary School



LeRoy Neiman (1921-2012) was an American artist who blended a Pop Art sensibility with impressionistic brushwork and vibrant color. Neiman was well known for his expressionistic paintings and screen prints of athletes, musicians, and sporting events. He would sometimes perform on television, captivating audiences by drawing or painting portraits live on the air.

Pershing K8 School



Edvard Munch (1863-1944) was a Norwegian painter whose Expressionist works portrayed emotional discord. He experimented with many different themes, palettes, and styles of drawing, however, expressing individual psychology through intense color and semi-abstraction prevails in Munch's works. Often reworking his paintings into etchings and lithographs, Munch was one of the major graphic artists of the 20th century.

Pineloch Elementary School



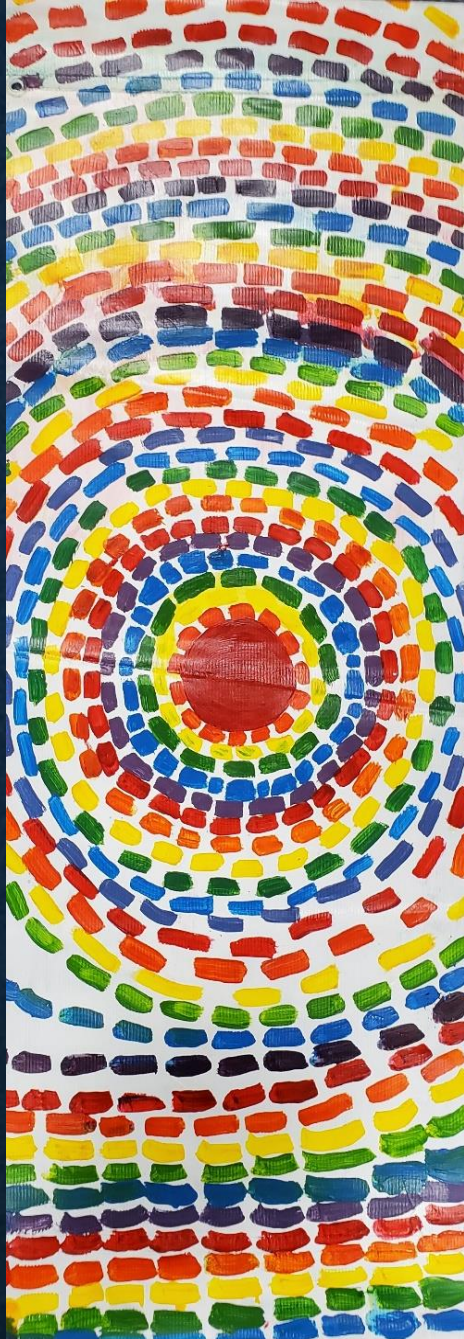
Frank Philip Stella (Born 1936) is an American painter, sculptor and printmaker, noted for his work in the areas of minimalism and post-painterly abstraction. He is well known for his use of geometric patterns and shapes in creating both paintings and sculptures. Arguably one of the most influential living American artists, Stella's works utilize the formal properties of shape, color, and composition to explore non-literary narratives. Stella lives and works in Greenwich Village, New York City.

Pinewood Elementary School



Kev Munday (born 1986) is a British Postwar & Contemporary artist whose studio features paintings, both on canvas and other objects such as grandfather clocks. His paintings have brought new life to things such as violins, an upright piano and even a graffitied police car. He undertakes large commission projects and enjoys projects such as painting office murals. Munday's style exaggerates and celebrates the ordinary.

Pine Hills Elementary School



Alma Thomas (1891-1978) was an African-American Expressionist painter and art educator. She is best known for her colorful, abstract compositions. Thomas' distinctive color field paintings recall the techniques of Pointillism and Abstract Expressionism. She frequently translated art historical references, natural phenomena, and personal aesthetic through simple compositions of circular and linear form. Thomas primarily lived and worked in Washington, DC.

Robinswood Middle School



Yayoi Kusama (born 1929) is a Japanese contemporary artist who works primarily in sculpture and installation, but also in painting and film. This avant-garde artist was an influential figure in the postwar New York art scene. Her work is based in conceptual art and shows some attributes of feminism, minimalism, surrealism, Art Brut, pop art, and abstract expressionism, and is infused with autobiographical, psychological, and sexual content. Kusama is considered one of the most important living artist to come out of Japan.

Ridgewood Park Elementary School



Salvador Dalí (1904-1989) was a Spanish artist and a leading proponent of Surrealism. He was also a prolific writer and early filmmaker. Dalí is known for his enigmatic paintings of dreamscapes and religious themes as well as for his public persona and flamboyant mustache. His exhaustive endeavors into fields ranging from fine art to fashion to jewelry to retail and theater design positioned him as a prolific businessman as well as creator.

Rock Lake Elementary School



Susan Boulet (1941-1997) was a noted San Francisco Bay Area artist who was born in Brazil of English parents. Working primarily in French oil pastels, inks, and occasionally pencil, she developed a distinctive personal style characterized by the use of color applied in layers from which dream-like forms emerged. There is a fairy tale quality to Boulet's work.

Rock Springs Elementary School



Claude Monet (1840-1926) was a French painter known for his pioneer role in the development of Impressionism. He was concerned with conveying atmosphere and light with broken brushstrokes and complementary colors. Monet was interested in portraying the French countryside by painting the same scene many times in order to capture the changing of light and the passing of the seasons. The term Impressionism is derived from the title of his painting *Impression, Sunrise*.

Rosemont Elementary School



Pablo Picasso (1881-1973) was a Spanish painter, sculptor, printmaker, ceramicist, stage designer, poet, and playwright. He was one of the most influential artists of the 20th century. His ingenious use of form, color, and perspective profoundly impacted later generations of painters. Picasso is known for co-founding the Cubist movement. He was inspired by African and Iberian art and developments in the world around him. Picasso was a prolific innovator of art forms and his works are often categorized into periods.

Sally Ride Elementary School



Vincent Van Gogh (1853-1890) was a Dutch post-impressionist painter who is among the most famous and influential figures in the history of Western art. In just over a decade, Van Gogh produced over 2,100 works of art. His works are characterized by vivid palettes and lively brushwork, often featuring depictions of street scenes, sunflowers and portraits. It was during a dark period of his life that Van Gogh famously cut off his own ear in a fit of mental anguish.

Sally Ride Elementary School



Claude Monet (1840-1926) was a French painter known for his pioneer role in the development of Impressionism. He was concerned with conveying atmosphere and light with broken brushstrokes and complementary colors. Monet was interested in portraying the French countryside by painting the same scene many times in order to capture the changing of light and the passing of the seasons. The term Impressionism is derived from the title of his painting *Impression, Sunrise*.

Sandlake Elementary School



Andy Warhol (1928-1987) was an American artist, film director and producer. He was one of the most influential artists of the second half of the 20th century, creating some of the most recognizable images ever produced. His works explored relationships between artistic expression, advertising, and the celebrity culture of the 1960's. Warhol worked in a variety of media including painting, silkscreening, photography, film, and sculpture.

Shenandoah Elementary School



Robin Mead is an American artist whose works include digital and altered art, acrylic and mixed media paintings and watercolor landscapes and gardens. She loves to experiment with mixed media and bold watercolors in her landscapes and gardens. Additionally, she works with fiber, including crochet afghans and handmade art journals. Originally living and working in New York, Mead chose the small town life style in a move to Northeast Georgia in 2013.

Shingle Creek Elementary School



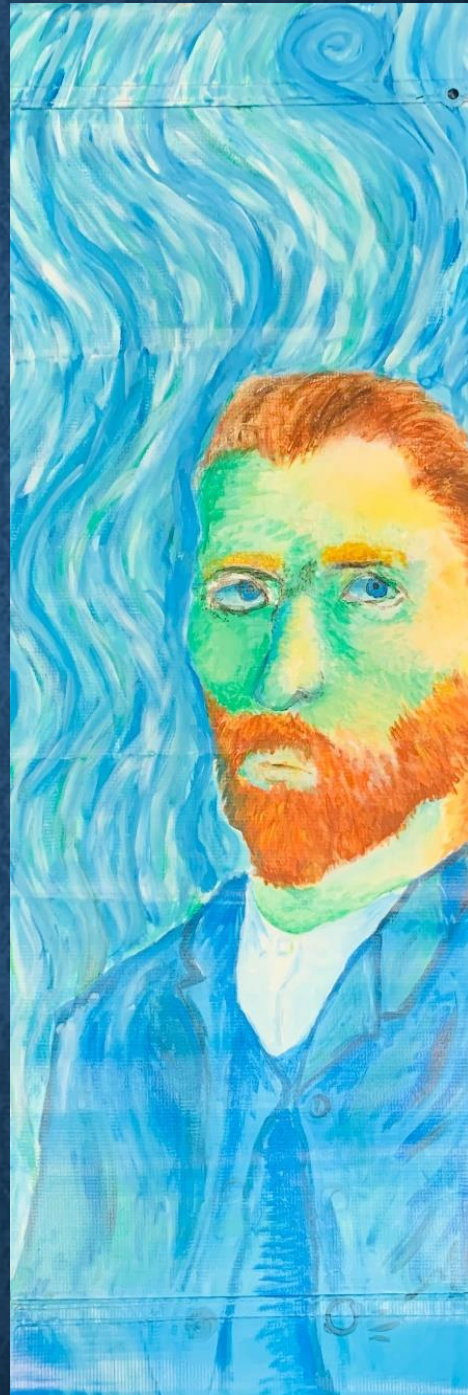
Roy Lichtenstein (1923-1997) was an American Pop artist known for his paintings and prints which referenced commercial art and popular culture icons like Mickey Mouse. Mining material from advertisements and comics, he brought commercial art into the gallery. Lichtenstein rendered flat, single-color Ben-Day dots by hand using paint and stencils. By embracing "low" art such as comic books and popular illustration, Lichtenstein became one of the most important figures in the Pop art movement.

Southwest Middle School



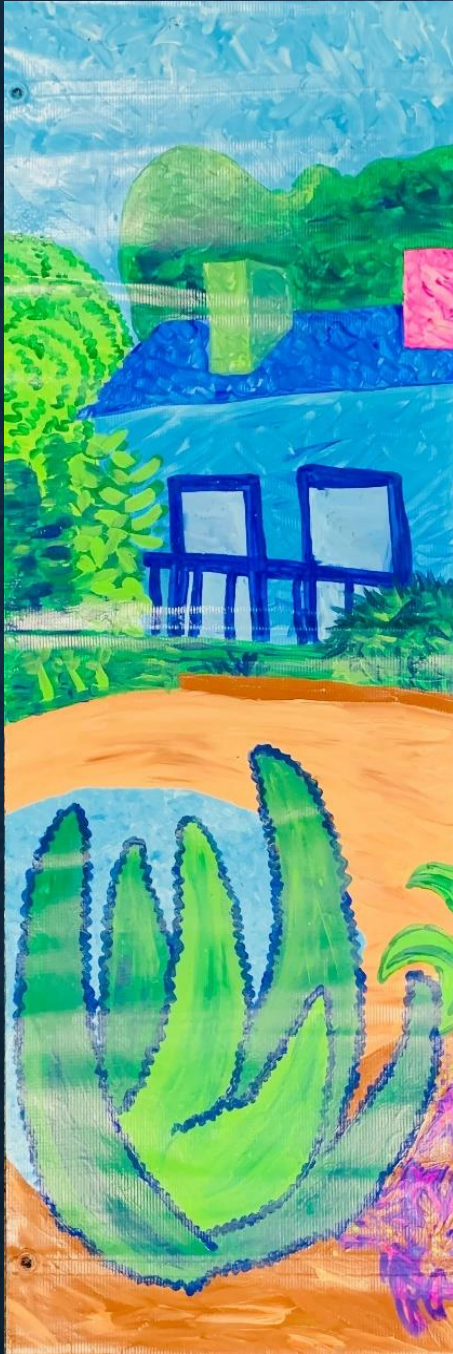
Vincent Van Gogh (1853-1890) was a Dutch post-impressionist painter who is among the most famous and influential figures in the history of Western art. In just over a decade, Van Gogh produced over 2,100 works of art. His works are characterized by vivid palettes and lively brushwork, often featuring depictions of street scenes, sunflowers and portraits. It was during a dark period of his life that Van Gogh famously cut off his own ear in a fit of mental anguish.

Southwest Middle School



Vincent Van Gogh (1853-1890) was a Dutch post-impressionist painter who is among the most famous and influential figures in the history of Western art. In just over a decade, Van Gogh produced over 2,100 works of art. His works are characterized by vivid palettes and lively brushwork, often featuring depictions of street scenes, sunflowers and portraits. It was during a dark period of his life that Van Gogh famously cut off his own ear in a fit of mental anguish.

Spring Lake Elementary School



David Hockney (born 1937) is one of the most influential British artists of the 20th century. A pioneer of the British Pop Art movement, he gained recognition for his semi-abstract paintings. A versatile artist, Hockney has produced work in almost every medium—including full-scale opera set designs, prints, and drawings using cutting-edge technology such as fax machines, laser photocopiers, computers, and personal electronics.

Sun Blaze Elementary School



Piet Mondrian (1872-1944) was a Dutch painter and theoretician who is known for being one of the pioneers of 20th century abstract art. Over his lifetime, he changed his artistic direction from figurative painting to an increasingly abstract style. In Mondrian's abstract paintings, he sought to reveal universal harmony and order. Mondrian's work had an enormous impact on 20th century art, influencing not only the course of abstract painting, but also fields outside of painting such as design, architecture, and fashion.

Sunrise Elementary School



Mary Blair (1911-1978) was an American artist, animator, and designer. She joined the Walt Disney Company in 1940 and was one of Walt Disney's favorite artists. Blair drew concept art for Disney films as well as created character designs for the attractions. She developed a distinct look to her concept art by using vivid colors from gouache and tempera to create swirling, highly imaginative images. When Blair left Disney, she concentrated on illustrating children's books.

Tangelo Park Elementary School



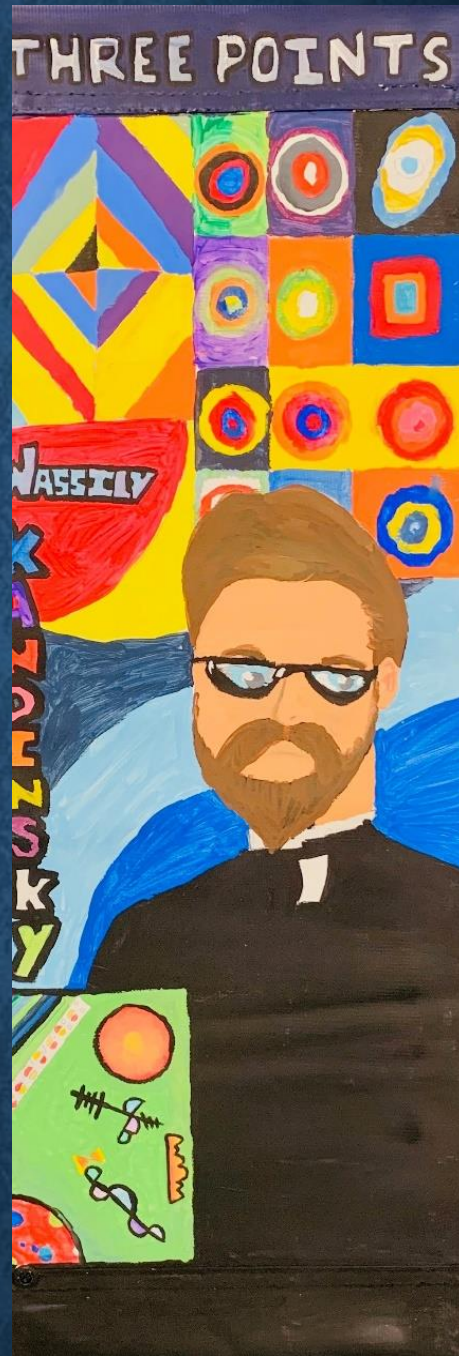
Angel Botello (1913-1986) was a Spanish-Puerto Rican painter, sculptor and graphic artist. He was best known for his use of vibrant colors and depictions of island life and people in Haiti, Cuba, the Dominican Republic, and Puerto Rico. He is considered to be one of the greatest Latin American post-modern artists and his versatility is seen in his oil paintings, drawings, printmaking, bronze sculptures, wood carvings, photography, and mosaics.

Tangelo Park Elementary School



Pablo Picasso (1881-1973) was a Spanish painter, sculptor, printmaker, ceramicist, stage designer, poet, and playwright. He was one of the most influential artists of the 20th century. His ingenious use of form, color, and perspective profoundly impacted later generations of painters. Picasso is known for co-founding the Cubist movement. He was inspired by African and Iberian art and developments in the world around him. Picasso was a prolific innovator of art forms and his works are often categorized into periods.

Three Points Elementary School



Wassily Kandinsky (1866-1944) was a Russian painter and art theorist generally credited as a pioneer of abstract art. His vibrant abstract paintings paved the way for Non-Objective Art. He often described color as sound, using musical terminology to title several of his most famous works. Kandinsky exploited the evocative interrelation between color and form to create an aesthetic experience that engaged the sight, sound, and emotions of the public.

Tildenville Elementary School



Vincent Van Gogh (1853-1890) was a Dutch post-impressionist painter who is among the most famous and influential figures in the history of Western art. In just over a decade, Van Gogh produced over 2,100 works of art. His works are characterized by vivid palettes and lively brushwork, often featuring depictions of street scenes, sunflowers and portraits. It was during a dark period of his life that Van Gogh famously cut off his own ear in a fit of mental anguish.

Timbercreek High School



Katsushika Hokusai (1760-1849) was a Japanese artist, ukiyo-e painter and printmaker. While Hokusai was prolific and made prints on a range of subjects, it is his landscapes that had the most impact. His prints had a mass appeal as Hokusai interpreted famous sites through the lens of everyday experience rather than literary, historical or imperial significance.

The mood of his prints draws strongly from his focus on seasonal phenomena, fleeting weather conditions or festivities that marked the passing of time.

Timber Lakes Elementary School



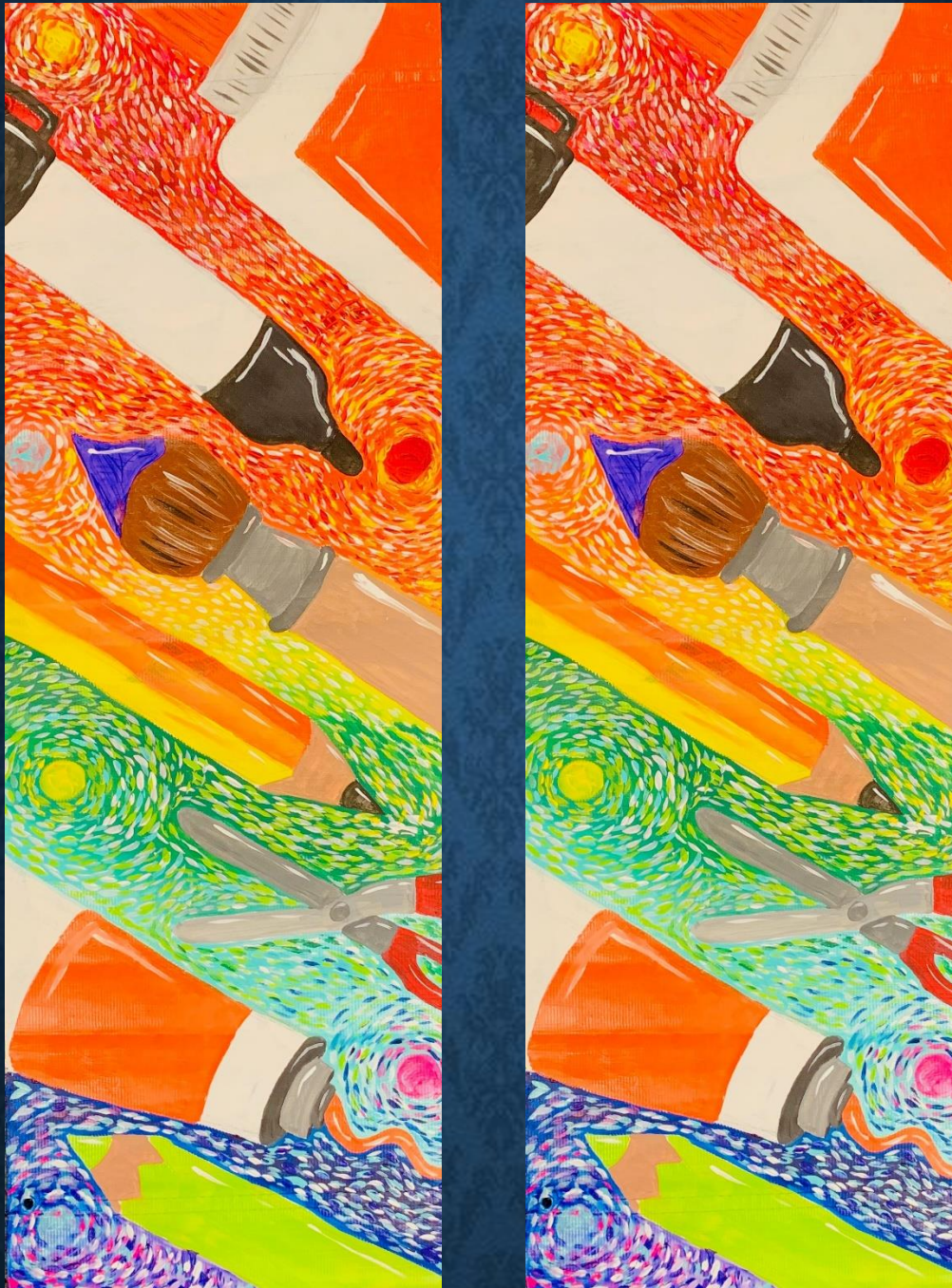
Eric Carle (born 1929) is an American designer, illustrator, and author of children's books. His art work is created in collage technique, using hand-painted papers, which he cuts and layers to form bright and cheerful images. His art is distinctive and instantly recognizable. Carle has won many awards for his work with children's books.

University High School



Banksy (born 1974) is a contemporary British street artist and activist who, despite his international fame, has maintained an anonymous identity. There is not much known about the artist, but it is thought that Banksy was born in Bristol, United Kingdom and started his career as a graffiti artist in the city. Among the artist's most famous stunts include the shredding of a painting just as the hammer went down at auction with a \$1.4 million price tag. Most often using spray paint and stencils, Banksy has crafted a signature, immediately identifiable graphic style.

Union Park Middle School



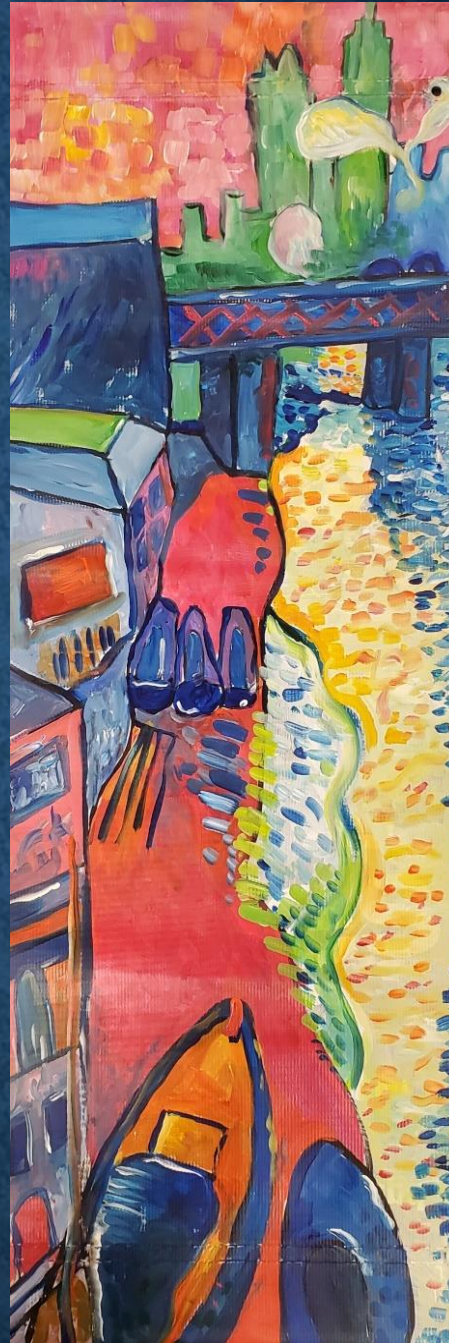
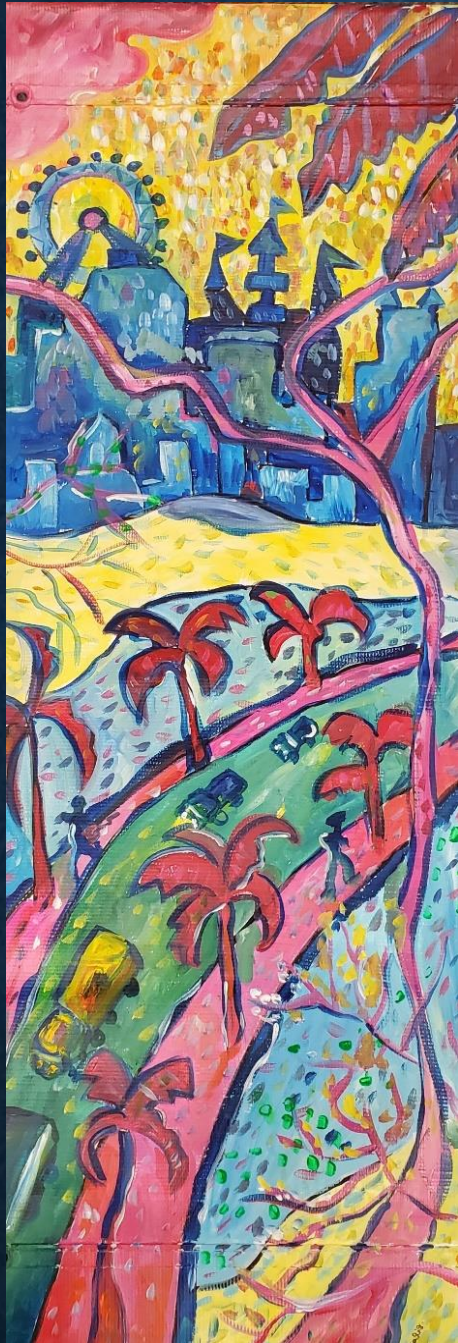
Vincent Van Gogh (1853-1890) was a Dutch post-impressionist painter who is among the most famous and influential figures in the history of Western art. In just over a decade, Van Gogh produced over 2,100 works of art. His works are characterized by vivid palettes and lively brushwork, often featuring depictions of street scenes, sunflowers and portraits. It was during a dark period of his life that Van Gogh famously cut off his own ear in a fit of mental anguish.

Ventura Elementary School



Andy Warhol (1928-1987) was an American artist, film director and producer. He was one of the most influential artists of the second half of the 20th century, creating some of the most recognizable images ever produced. His works explored relationships between artistic expression, advertising, and the celebrity culture of the 1960's. Warhol worked in a variety of media including painting, silk-screening, photography, film, and sculpture.

Washington Shores Elementary School



Andre Derain (1880-1954) was a French painter, sculptor, printmaker, and designer. Derain is well known for his contributions to the avant-garde movement of Fauvism and Cubism. He is most known for his landscapes, portraits, and still lifes works of art.

Waterford Elementary School



Piet Mondrian (1872-1944) was a Dutch painter and theoretician who is known for being one of the pioneers of 20th century abstract art. Over his lifetime, he changed his artistic direction from figurative painting to an increasingly abstract style. In Mondrian's abstract paintings, he sought to reveal universal harmony and order. Mondrian's work had an enormous impact on 20th century art, influencing not only the course of abstract painting, but also fields outside of painting such as design, architecture, and fashion.

Wedgefield K8 School



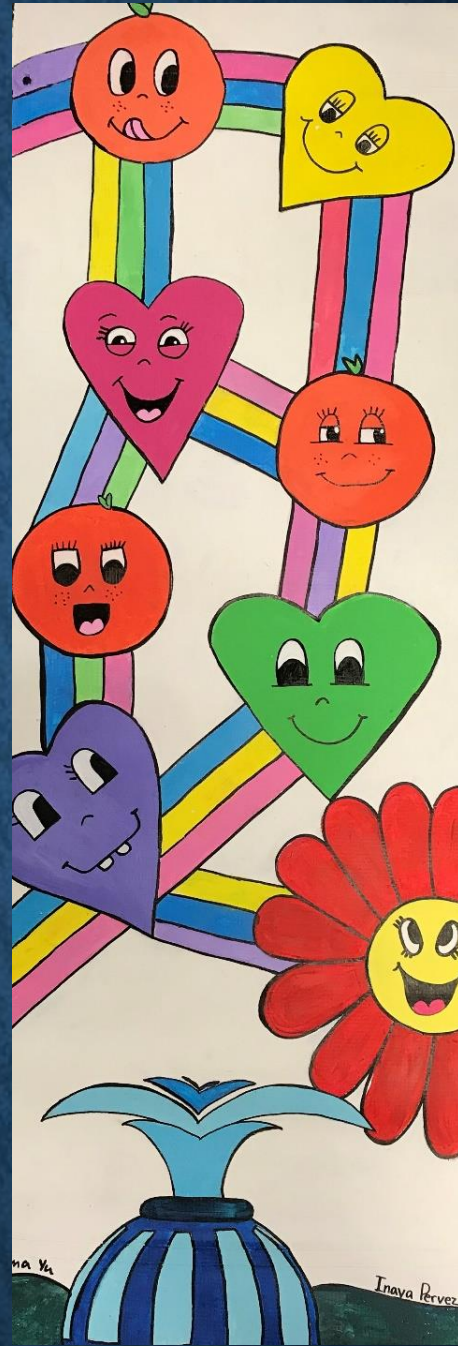
Peter Max (born 1937) is a German-American artist known for his unique brand of rainbow-hued prints and paintings. His illustrations incorporate a wide spectrum of colors and patterns. Works by Max are associated with the visual arts and culture of the 1960's. After becoming involved with the psychedelic movement, he created posters for bands of the time.

Wekiva High School



Sonia Delaunay (1885-1975) was a Ukrainian-born French artist and designer known for her bold use of colorful geometric patterns. Along with her husband Robert Delaunay and others, she cofounded the Orphism art movement. Her ability to introduce art into regular life by creating and wearing clothing, and living in spaces that were of her own design, can be seen as an early form of performance art. Delaunay became the first living female artist to have a retrospective at the Louvre Museum

West Creek Elementary School



Chris Uphues (born 1971) is an American artist known for his signature pop art. He collaborates with his wife to create colorful, playful, and fun items which are sold through their company, Beautiful Days. The artwork is an energetic mash-up of pop culture and vintage.

Westpointe Elementary School



Romare Bearden (1911-1988) was an African-American artist, activist, and writer. He was a pioneer of African-American art, particularly known for collage. Each of his collages integrated images painted in gouache, watercolors, and oil paints and then fixed to paper or canvas. Bearden sought to give the African-American experience a universal, monumental, and Classical representation. Bearden's importance is in revising the art of collage for the American story.

Wheatley Elementary School



Jean-Michel Basquiat (1960-1988) was an American artist of Haitian and Puerto Rican descent. He is a poet, musician, and graffiti prodigy in late-1970's New York. His early work consisted of spray painting buildings and trains in downtown New York. Basquiat's paintings are largely responsible for elevating graffiti artists into the realm of the New York gallery scene. His spray-painted crowns and scribbled words, referenced everything from his Haitian and Puerto Rican heritage, to political issues, pop-culture icons, and Biblical verse.

Whispering Oak Elementary School



Jackson Pollock (1912-1956) was one of the most famous Post-War American artists. His art brought together elements of Cubism, Surrealism, and Impressionism, and transcended them all. Pollock's drip paintings were formed by pouring and manipulating liquid paint atop canvases set on the floor. He would use the force of his whole body to paint, often in a frenetic dancing style. Pollock is major figure in the abstract expressionist movement.

Winegard Elementary School



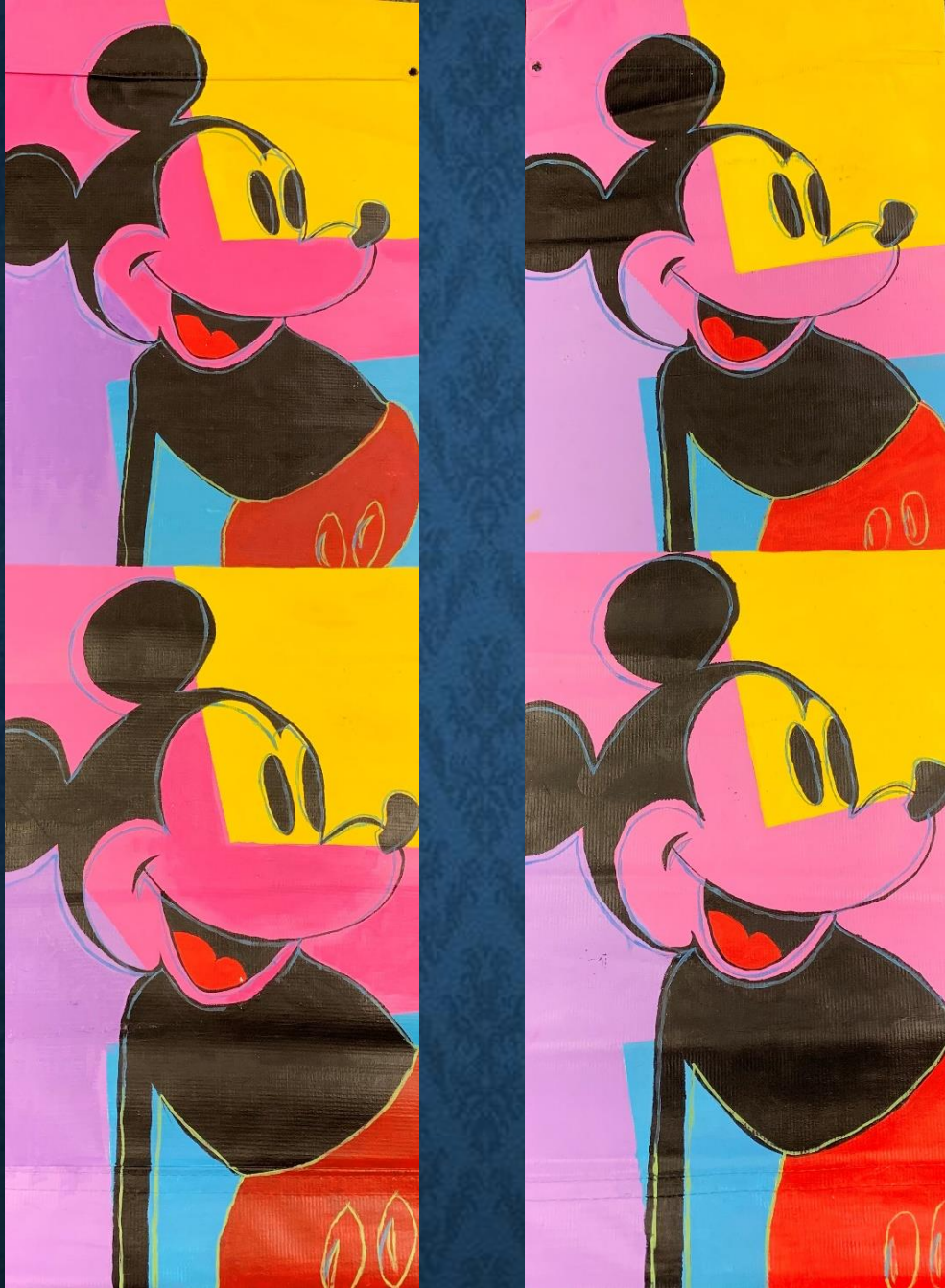
Romero Britto (born 1963) is a Brazilian artist, painter, serigrapher and sculptor currently living in Miami, FL. His distinct graphic style blends Pop Art with Cubist-like abstraction. He has found commercial success through work with brand campaigns. Britto combines elements of cubism, pop art and graffiti painting in his work. He is known for using vibrant colors and bold patterns to visually express hope, dreams and happiness.

Windermere Elementary School



Paul Klee (1879-1940) was a Swiss artist and important figure in the development of early 20th-century avant-garde art. His highly individualized style was influenced by Surrealism, Cubism and Expressionism. Klee was a natural draftsman who deeply explored color theory. His works reflect his dry humor and sometimes childlike perspective, his personal moods and beliefs, and his musicality.

Windermere High School



Andy Warhol (1928-1987) was an American artist, film director and producer. He was one of the most influential artists of the second half of the 20th century, creating some of the most recognizable images ever produced. His works explored relationships between artistic expression, advertising, and the celebrity culture of the 1960's. Warhol worked in a variety of media including painting, silk-screening, photography, film, and sculpture.

Windermere High School



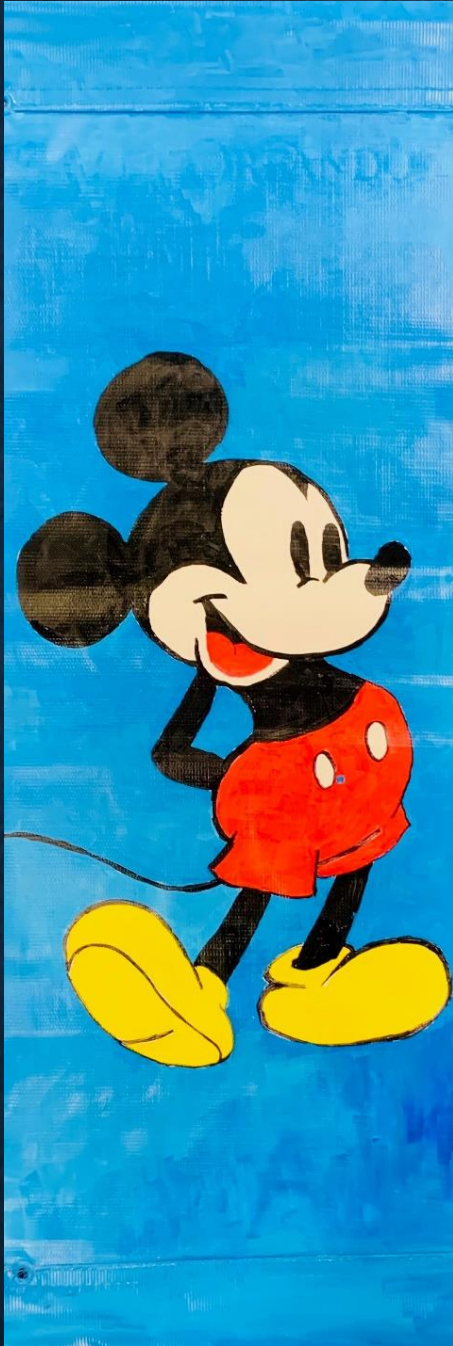
Jean-Honore' Fragonard (1732-1806) was a French Rococo painter. He is well known for his depictions of lovers, young women, and picnics in the gardens. His application of paint, with its attention to light and reliance on quick, expressive brushstrokes, had a strong influence on the Impressionists. Among Fragonard's most popular works are genre paintings conveying an atmosphere of intimacy.

Windy Ridge K8 School



Friedensreich Hundertwasser (1928-2000) was an Austrian-born New Zealand artist, architect and designer. He was inspired by Viennese Secessionists as can be seen in his passion for spirals and arabesque lines. He stood out as an opponent of “a straight line”. Hundertwasser also worked in the field of environmental protection.

Wolf Lake Middle School



Walt Disney (1901-1966) was an American entrepreneur, animator, voice actor and film producer. In his early 20's, a move to Hollywood and the opening of the Disney Brothers Studio was the start of what he developed into a multibillion-dollar family entertainment empire. Disney was the renowned creator of Mickey Mouse, the first sound cartoon. He was a pioneer of the American animation industry and has become the most successful cartoonist in history.

Wyndham Lakes Elementary School



Jim Dine (born 1935) is an American artist and poet known for his contributions to the formation of both Performance Art and Pop Art. His main influence can be found in the emergence of performance art, which sprung up following the Happenings in New York. Although Dine rejected the Pop art label, his colorful paintings in this style had a significant influence on a younger generation. He is considered an important figure in Neo-Dada and a forerunner of Neo-Expressionism.

Zellwood Elementary School



Charles Searles (1937-2004) was an African American artist born in Philadelphia who worked in New York. His early works embraced the tumultuous 60's and reflected his own family life and surroundings. His travels to Africa marked his work with rhythm, patterns and energy. Searles gradually moved away from painting and into sculpting where he created sculptures that seemed to dance in three dimensions. A lively sense of rhythm and energy are trademarks that Searles maintained throughout his career, whether in wood, bronze, or aluminum.

PURSUIT OF THE ARTS FUND



FOUNDATION

FOR **ORANGE COUNTY** PUBLIC SCHOOLS

Investing in Success

The Pursuit of the Arts Fund provides scholarship and support to graduates of Orange County (FL) Public Schools who experience poverty or homelessness (with emphasis on those who qualified for McKinney-Vento Act provisions during their senior year) and are pursuing post-secondary education in the visual or performing arts. Students who are the recipients of this scholarship are in a very vulnerable spot during a critical juncture in their lives. We know that the arts can transform lives, and your gift will help to incubate the talent and future of our budding artists and performers.

[DONATE HERE](#)